

# LY86 Rabbit pAb

Catalog No.: A17051

## Basic Information

### Observed MW

18kDa

### Calculated MW

18kDa

### Category

Primary antibody

### Applications

ELISA, WB

### Cross-Reactivity

Human, Mouse

## Background

Acts upstream of or within positive regulation of lipopolysaccharide-mediated signaling pathway. Predicted to be located in extracellular space.

## Recommended Dilutions

WB 1:500 - 1:2000

## Immunogen Information

### Gene ID

9450

### Swiss Prot

O95711

### Immunogen

A synthetic peptide corresponding to a sequence within amino acids 50-150 of human LY86 (NP\_004262.1).

### Synonyms

MD1; MD-1; MMD-1; dj80N2.1; LY86

## Contact

☎ | 400-999-6126

✉ | [cn.market@abclonal.com.cn](mailto:cn.market@abclonal.com.cn)

🌐 | [www.abclonal.com.cn](http://www.abclonal.com.cn)

## Product Information

### Source

Rabbit

### Isotype

IgG

### Purification

Affinity purification

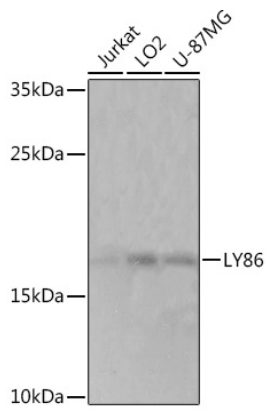
### Storage

Store at -20°C. Avoid freeze / thaw cycles.

Buffer: PBS with 0.01% thimerosal, 50% glycerol, pH7.3.

## Validation Data

---



Western blot analysis of various lysates using LY86 Rabbit pAb (A17051) at 1:1000 dilution.  
Secondary antibody: HRP Goat Anti-Rabbit IgG (H+L) (AS014) at 1:10000 dilution.  
Lysates/proteins: 25µg per lane.  
Blocking buffer: 3% nonfat dry milk in TBST.  
Detection: ECL Basic Kit (RM00020).  
Exposure time: 90s.