

TBC1D5 Rabbit pAb

Catalog No.: A17059

Basic Information

Observed MW

91kDa

Calculated MW

89kDa

Category

Primary antibody

Applications

ELISA, WB

Cross-Reactivity

Human, Rat

Background

Enables AP-2 adaptor complex binding activity and retromer complex binding activity. Involved in several processes, including macroautophagy; positive regulation of receptor internalization; and retrograde transport, endosome to Golgi. Located in Golgi apparatus; autophagosome; and endosome membrane. Part of retromer complex. Colocalizes with AP-2 adaptor complex and Atg1/ULK1 kinase complex.

Recommended Dilutions

WB 1:500 - 1:2000

Immunogen Information

Gene ID

9779

Swiss Prot

Q92609

Immunogen

Recombinant fusion protein containing a sequence corresponding to amino acids 446-795 of human TBC1D5 (NP_055559.1).

Synonyms

TBC1D5

Contact

 | 400-999-6126

 | cn.market@abclonal.com.cn

 | www.abclonal.com.cn

Product Information

Source

Rabbit

Isotype

IgG

Purification

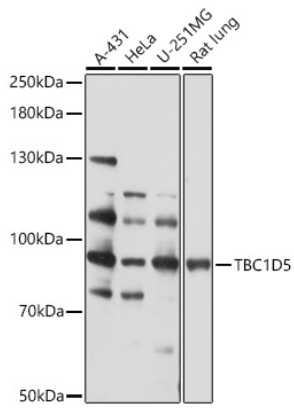
Affinity purification

Storage

Store at -20°C. Avoid freeze / thaw cycles.

Buffer: PBS with 0.01% thimerosal, 50% glycerol, pH7.3.

Validation Data



Western blot analysis of various lysates using TBC1D5 Rabbit pAb (A17059) at 1:1000 dilution.
Secondary antibody: HRP Goat Anti-Rabbit IgG (H+L) (AS014) at 1:10000 dilution.
Lysates/proteins: 25µg per lane.
Blocking buffer: 3% nonfat dry milk in TBST.
Detection: ECL Basic Kit (RM00020).
Exposure time: 90s.