

TELO2 Rabbit pAb

Catalog No.: A17064

Basic Information

Observed MW

102kDa

Calculated MW

92kDa

Category

Primary antibody

Applications

ELISA, WB

Cross-Reactivity

Human, Mouse

Background

This gene encodes a protein that functions as an S-phase checkpoint protein in the cell cycle. The protein may also play a role in DNA repair.

Recommended Dilutions

WB 1:500 - 1:2000

Immunogen Information

Gene ID

9894

Swiss Prot

Q9Y4R8

Immunogen

A synthetic peptide corresponding to a sequence within amino acids 450-550 of human TELO2 (NP_057195.2).

Synonyms

CLK2; TEL2; YHFS; TELO2

Contact

 | 400-999-6126

 | cn.market@abclonal.com.cn

 | www.abclonal.com.cn

Product Information

Source

Rabbit

Isotype

IgG

Purification

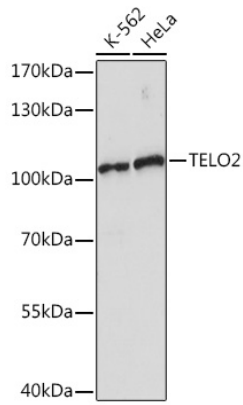
Affinity purification

Storage

Store at -20°C. Avoid freeze / thaw cycles.

Buffer: PBS with 0.01% thimerosal, 50% glycerol, pH7.3.

Validation Data



Western blot analysis of various lysates using TELO2 Rabbit pAb (A17064) at 1:1000 dilution.
Secondary antibody: HRP Goat Anti-Rabbit IgG (H+L) (AS014) at 1:10000 dilution.
Lysates/proteins: 25µg per lane.
Blocking buffer: 3% nonfat dry milk in TBST.
Detection: ECL Enhanced Kit (RM00021).
Exposure time: 90s.