

[KO Validated] β III-Tubulin Rabbit pAb

Catalog No.: A17074

KO Validated

5 Publications

Basic Information

Observed MW

55kDa

Calculated MW

50kDa

Category

Primary antibody

Applications

WB, IF-P, ELISA

Cross-Reactivity

Human, Mouse, Rat

Background

This gene encodes a class III member of the beta tubulin protein family. Beta tubulins are one of two core protein families (alpha and beta tubulins) that heterodimerize and assemble to form microtubules. This protein is primarily expressed in neurons and may be involved in neurogenesis and axon guidance and maintenance. Mutations in this gene are the cause of congenital fibrosis of the extraocular muscles type 3. Alternate splicing results in multiple transcript variants. A pseudogene of this gene is found on chromosome 6.

Recommended Dilutions

WB 1:500 - 1:2000**IF-P** 1:50 - 1:200

ELISA Recommended starting concentration is 1 μ g/mL. Please optimize the concentration based on your specific assay requirements.

Immunogen Information

Gene ID

10381

Swiss Prot

Q13509

Immunogen

Recombinant protein (or fragment). This information is considered to be commercially sensitive.

Synonyms

CDCBM; FEOM3; TUBB4; CDCBM1; CFEOM3; beta-4; CFEOM3A; in

Contact

 | 400-999-6126 | cn.market@abclonal.com.cn | www.abclonal.com.cn

Product Information

Source

Rabbit

Isotype

IgG

Purification

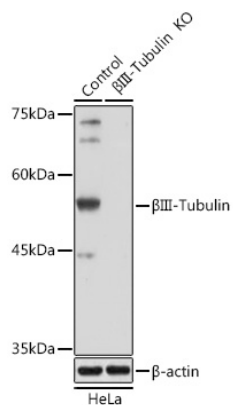
Affinity purification

Storage

Store at -20°C. Avoid freeze / thaw cycles.

Buffer: PBS containing 50% glycerol, preserved with proclin300 or sodium azide (as specified on the Certificate of Analysis), pH 7.3.

Validation Data



Western blot analysis of lysates from wild type (WT) and β III-Tubulin/ β 3-Tubulin knockout (KO) HeLa cells, using [KO Validated] β III-Tubulin Rabbit pAb (A17074) at 1:1000 dilution.

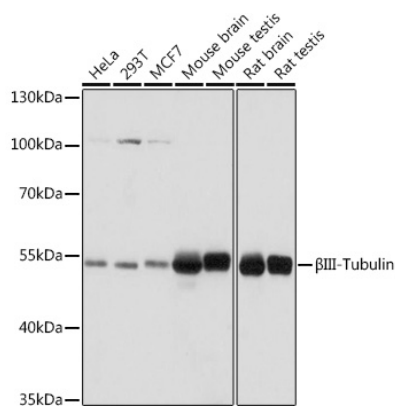
Secondary antibody: HRP-conjugated Goat anti-Rabbit IgG (H+L) (AS014) at 1:10000 dilution.

Lysates/proteins: 25 μ g per lane.

Blocking buffer: 3% nonfat dry milk in TBST.

Detection: ECL Basic Kit (RM00020).

Exposure time: 1s.



Western blot analysis of various lysates using [KO Validated] β III-Tubulin Rabbit pAb (A17074) at 1:1000 dilution.

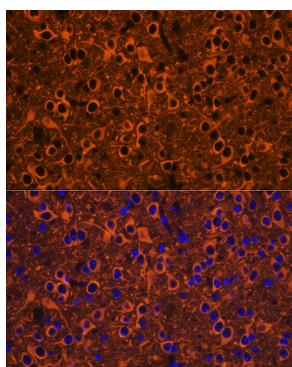
Secondary antibody: HRP-conjugated Goat anti-Rabbit IgG (H+L) (AS014) at 1:10000 dilution.

Lysates/proteins: 25 μ g per lane.

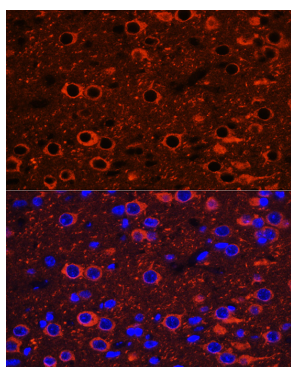
Blocking buffer: 3% nonfat dry milk in TBST.

Detection: ECL Basic Kit (RM00020).

Exposure time: 1s.



Immunofluorescence analysis of paraffin-embedded Mouse brain using [KO Validated] β III-Tubulin Rabbit pAb (A17074) at dilution of 1:100 (40x lens). Secondary antibody: Cy3-conjugated Goat anti-Rabbit IgG (H+L) (AS007) at 1:500 dilution. Blue: DAPI for nuclear staining.



Immunofluorescence analysis of paraffin-embedded Rat brain using [KO Validated] β III-Tubulin Rabbit pAb (A17074) at dilution of 1:100 (40x lens). Secondary antibody: Cy3-conjugated Goat anti-Rabbit IgG (H+L) (AS007) at 1:500 dilution. Blue: DAPI for nuclear staining.