

TMEM147 Rabbit pAb

Catalog No.: A17076

Basic Information

Observed MW

25kDa

Calculated MW

25kDa

Category

Primary antibody

Applications

ELISA, WB

Cross-Reactivity

Human, Mouse

Background

Enables ribosome binding activity. Located in endoplasmic reticulum membrane. Part of protein-containing complex.

Recommended Dilutions

WB 1:500 - 1:2000

Immunogen Information

Gene ID

10430

Swiss Prot

Q9BVK8

Immunogen

A synthetic peptide corresponding to a sequence within amino acids 1-100 of human TMEM147 (NP_116024.1).

Synonyms

NEDFLPH; NIFIE14; TMEM147

Contact

☎ | 400-999-6126

✉ | cn.market@abclonal.com.cn

🌐 | www.abclonal.com.cn

Product Information

Source

Rabbit

Isotype

IgG

Purification

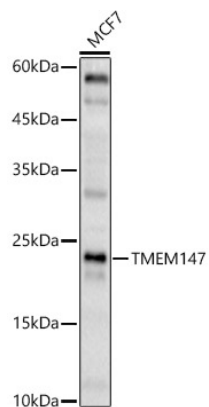
Affinity purification

Storage

Store at -20°C. Avoid freeze / thaw cycles.

Buffer: PBS with 0.01% thimerosal, 50% glycerol, pH7.3.

Validation Data



Western blot analysis of lysates from MCF7 cells, using TMEM147 Rabbit pAb (A17076) at 1:2000 dilution.
Secondary antibody: HRP Goat Anti-Rabbit IgG (H+L) (AS014) at 1:10000 dilution.
Lysates/proteins: 25µg per lane.
Blocking buffer: 3% nonfat dry milk in TBST.
Detection: ECL Basic Kit (RM00020).
Exposure time: 30s.