

KANK1 Rabbit pAb

Catalog No.: A17106

Basic Information

Observed MW

Refer to figures

Calculated MW

147kDa

Category

Primary antibody

Applications

IF/ICC,ELISA

Cross-Reactivity

Mouse

Background

The protein encoded by this gene belongs to the Kank family of proteins, which contain multiple ankyrin repeat domains. This family member functions in cytoskeleton formation by regulating actin polymerization. This gene is a candidate tumor suppressor for renal cell carcinoma. Mutations in this gene cause cerebral palsy spastic quadriplegic type 2, a central nervous system development disorder. A t(5;9) translocation results in fusion of the platelet-derived growth factor receptor beta gene (PDGFRB) on chromosome 5 with this gene in a myeloproliferative neoplasm featuring severe thrombocythemia. Alternative splicing of this gene results in multiple transcript variants. A related pseudogene has been identified on chromosome 20.

Recommended Dilutions

IF/ICC 1:50 - 1:200**ELISA** Recommended starting concentration is 1 µg/mL. Please optimize the concentration based on your specific assay requirements.

Immunogen Information

Gene ID

23189

Swiss Prot

Q14678

Immunogen

Synthetic peptide. This information is considered to be commercially sensitive.

Synonyms

KANK; CPSQ2; ANKRD15; KANK1

Contact

 | 400-999-6126 | cn.market@abclonal.com.cn | www.abclonal.com.cn

Product Information

Source

Rabbit

Isotype

IgG

Purification

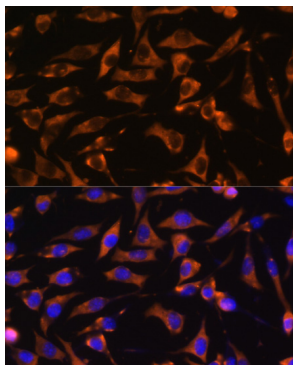
Affinity purification

Storage

Store at -20°C. Avoid freeze / thaw cycles.

Buffer: PBS with 0.01% thimerosal, 50% glycerol, pH7.3.

Validation Data



Immunofluorescence analysis of L929 cells using KANK1 Rabbit pAb (A17106) at dilution of 1:100. Blue: DAPI for nuclear staining.