

# ARL6IP1 Rabbit pAb

Catalog No.: A17107

## Basic Information

### Observed MW

22kDa

### Calculated MW

23kDa

### Category

Primary antibody

### Applications

ELISA, WB, IHC-P

### Cross-Reactivity

Human, Mouse, Rat

## Background

This gene belongs to the ARL6ip family and encodes a transmembrane protein that is predominantly localized to intracytoplasmic membranes. It is highly expressed in early myeloid progenitor cells and thought to be involved in protein transport, membrane trafficking, or cell signaling during hematopoietic maturation. Mutations in this gene are associated with spastic paraplegia 61 (SPG61). Alternatively spliced transcript variants have been found for this gene.

## Recommended Dilutions

WB	1:500 - 1:2000
IHC-P	1:50 - 1:100

## Immunogen Information

### Gene ID

23204

### Swiss Prot

Q15041

### Immunogen

A synthetic peptide corresponding to a sequence within amino acids 1-100 of human ARL6IP1 (NP\_055976.1).

### Synonyms

AIP1; ARMER; SPG61; ARL6IP; ARL6IP1

## Contact

 | 400-999-6126

 | [cn.market@abclonal.com.cn](mailto:cn.market@abclonal.com.cn)

 | [www.abclonal.com.cn](http://www.abclonal.com.cn)

## Product Information

### Source

Rabbit

### Isotype

IgG

### Purification

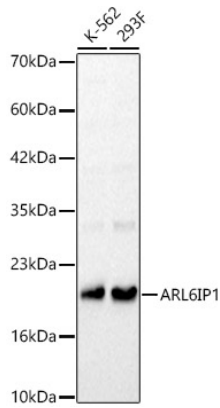
Affinity purification

### Storage

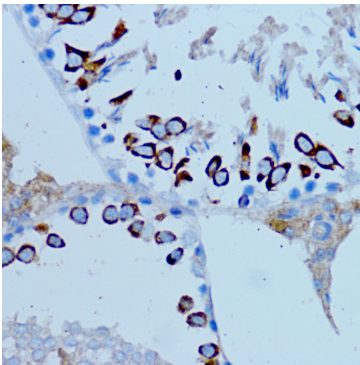
Store at -20°C. Avoid freeze / thaw cycles.

Buffer: PBS with 0.01% thimerosal, 50% glycerol, pH7.3.

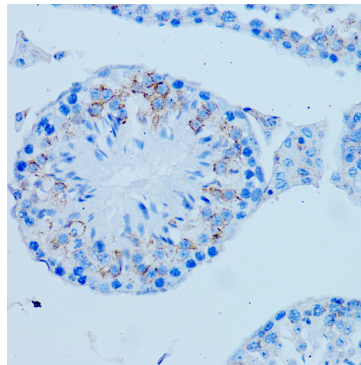
## Validation Data



Western blot analysis of various lysates, using ARL6IP1 Rabbit pAb (A17107) at 1:1000 dilution.  
Secondary antibody: HRP Goat Anti-Rabbit IgG (H+L) (AS014) at 1:10000 dilution.  
Lysates/proteins: 25ug per lane.  
Blocking buffer: 3% nonfat dry milk in TBST.  
Detection: ECL Basic Kit (RM00020).  
Exposure time: 10s.



Immunohistochemistry analysis of ARL6IP1 in paraffin-embedded Rat testis tissue using ARL6IP1 Rabbit pAb (A17107) at a dilution of 1:100 (40x lens). Microwave antigen retrieval performed with 0.01M PBS Buffer(pH 7.2) prior to IHC staining.



Immunohistochemistry analysis of ARL6IP1 in paraffin-embedded Mouse testis tissue using ARL6IP1 Rabbit pAb (A17107) at a dilution of 1:100 (40x lens). Microwave antigen retrieval performed with 0.01M PBS Buffer(pH 7.2) prior to IHC staining.