

GAPVD1 Rabbit pAb

Catalog No.: A17127

Basic Information

Observed MW

165kDa

Calculated MW

165kDa

Category

Primary antibody

Applications

ELISA, WB, IF/ICC

Cross-Reactivity

Mouse

Background

Enables GTPase activating protein binding activity and guanyl-nucleotide exchange factor activity. Involved in regulation of protein transport. Located in cytosol and plasma membrane.

Recommended Dilutions

WB 1:500 - 1:2000

IF/ICC 1:50 - 1:100

Immunogen Information

Gene ID

26130

Swiss Prot

Q14C86

Immunogen

Recombinant fusion protein containing a sequence corresponding to amino acids 1-260 of human GAPVD1 (NP_056450.2).

Synonyms

RAP6; GAPEX5; GAPex-5; GAPVD1

Contact

☎ | 400-999-6126

✉ | cn.market@abclonal.com.cn

🌐 | www.abclonal.com.cn

Product Information

Source

Rabbit

Isotype

IgG

Purification

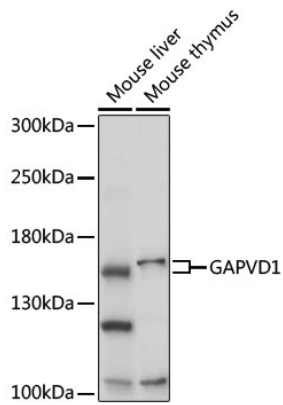
Affinity purification

Storage

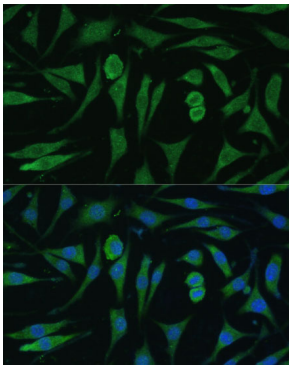
Store at -20°C. Avoid freeze / thaw cycles.

Buffer: PBS with 0.01% thimerosal, 50% glycerol, pH7.3.

Validation Data



Western blot analysis of various lysates using GAPVD1 Rabbit pAb (A17127) at 1:1000 dilution.
Secondary antibody: HRP Goat Anti-Rabbit IgG (H+L) (AS014) at 1:10000 dilution.
Lysates/proteins: 25µg per lane.
Blocking buffer: 3% nonfat dry milk in TBST.
Detection: ECL Basic Kit (RM00020).
Exposure time: 10s.



Immunofluorescence analysis of L929 cells using GAPVD1 Rabbit pAb (A17127) at dilution of 1:100. Secondary antibody: Cy3 Goat Anti-Rabbit IgG (H+L) (AS007) at 1:500 dilution. Blue: DAPI for nuclear staining.