

CHORDC1 Rabbit pAb

Catalog No.: A17135

Basic Information

Observed MW

37kDa

Calculated MW

37kDa

Category

Primary antibody

Applications

ELISA, WB

Cross-Reactivity

Mouse

Background

Enables Hsp90 protein binding activity. Predicted to be involved in centrosome duplication; chaperone-mediated protein folding; and regulation of cellular response to heat.

Recommended Dilutions

WB 1:500 - 1:2000

Immunogen Information

Gene ID

26973

Swiss Prot

Q9UHD1

Immunogen

Recombinant fusion protein containing a sequence corresponding to amino acids 60-160 of human CHORDC1 (NP_036256.2).

Synonyms

CHP1; CHORDC1

Contact

 | 400-999-6126

 | cn.market@abclonal.com.cn

 | www.abclonal.com.cn

Product Information

Source

Rabbit

Isotype

IgG

Purification

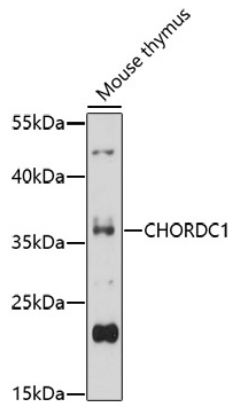
Affinity purification

Storage

Store at -20°C. Avoid freeze / thaw cycles.

Buffer: PBS with 0.01% thimerosal, 50% glycerol, pH7.3.

Validation Data



Western blot analysis of lysates from mouse thymus, using CHORDC1 Rabbit pAb (A17135) at 1:1000 dilution.

Secondary antibody: HRP Goat Anti-Rabbit IgG (H+L) (AS014) at 1:10000 dilution.

Lysates/proteins: 25µg per lane.

Blocking buffer: 3% nonfat dry milk in TBST.

Detection: ECL Basic Kit (RM00020).

Exposure time: 60s.