

CPSF1 Rabbit pAb

Catalog No.: A17144 **2 Publications**

Basic Information

Observed MW

170kDa/185kDa

Calculated MW

161kDa

Category

Primary antibody

Applications

ELISA, WB

Cross-Reactivity

Human, Mouse

Background

Cleavage and polyadenylation specificity factor (CPSF) is a multisubunit complex that plays a central role in 3-prime processing of pre-mRNAs. CPSF recognizes the AAUAAA signal in the pre-mRNA and interacts with other proteins to facilitate both RNA cleavage and poly(A) synthesis. CPSF1 is the largest subunit of the CPSF complex (Murthy and Manley, 1995 [PubMed 7590244]).

Recommended Dilutions

WB 1:500 - 1:2000

Immunogen Information

Gene ID

29894

Swiss Prot

Q10570

Immunogen

Recombinant fusion protein containing a sequence corresponding to amino acids 700-950 of human CPSF1 (NP_037423.2).

Synonyms

MYP27; CPSF160; P/cl.18; HSU37012; CPSF1

Contact

 | 400-999-6126

 | cn.market@abclonal.com.cn

 | www.abclonal.com.cn

Product Information

Source

Rabbit

Isotype

IgG

Purification

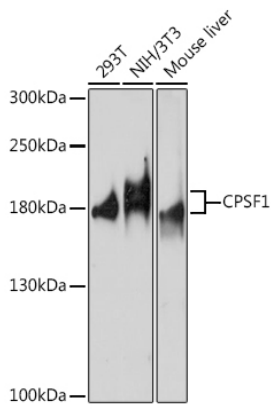
Affinity purification

Storage

Store at -20°C. Avoid freeze / thaw cycles.

Buffer: PBS with 0.01% thimerosal, 50% glycerol, pH7.3.

Validation Data



Western blot analysis of various lysates using CPSF1 Rabbit pAb (A17144) at 1:1000 dilution.
Secondary antibody: HRP Goat Anti-Rabbit IgG (H+L) (AS014) at 1:10000 dilution.
Lysates/proteins: 25µg per lane.
Blocking buffer: 3% nonfat dry milk in TBST.
Detection: ECL Basic Kit (RM00020).
Exposure time: 60s.