

# ARL6IP4 Rabbit pAb

Catalog No.: A17154

## Basic Information

### Observed MW

Refer to figures

### Calculated MW

26kDa

### Category

Primary antibody

### Applications

ELISA, IHC-P

### Cross-Reactivity

Human

## Background

Enables identical protein binding activity. Predicted to be involved in RNA splicing and mRNA processing. Predicted to be located in nucleus.

## Recommended Dilutions

IHC-P 1:50 - 1:200

## Immunogen Information

### Gene ID

51329

### Swiss Prot

Q66PJ3

### Immunogen

Recombinant fusion protein containing a sequence corresponding to amino acids 313-402 of human ARL6IP4 (NP\_057722.3).

### Synonyms

SR-25; SRp25; SFRS20; SRp37; ARL6IP4

## Contact

☎ | 400-999-6126

✉ | [cn.market@abclonal.com.cn](mailto:cn.market@abclonal.com.cn)

🌐 | [www.abclonal.com.cn](http://www.abclonal.com.cn)

## Product Information

### Source

Rabbit

### Isotype

IgG

### Purification

Affinity purification

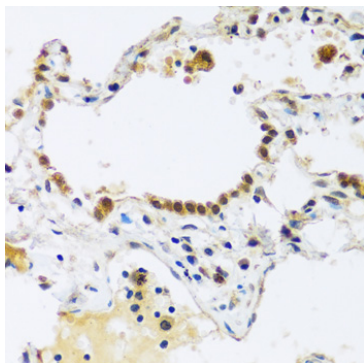
### Storage

Store at -20°C. Avoid freeze / thaw cycles.

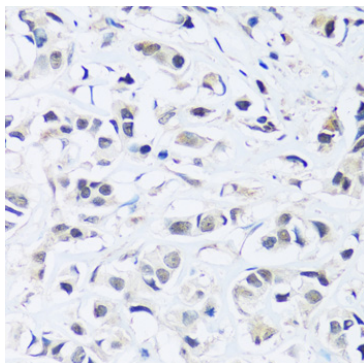
Buffer: PBS with 0.01% thimerosal, 50% glycerol, pH7.3.

## Validation Data

---



Immunohistochemistry analysis of ARL6IP4 in paraffin-embedded human lung using ARL6IP4 Rabbit pAb (A17154) at dilution of 1:100 (40x lens). Perform microwave antigen retrieval with 10 mM PBS buffer pH 7.2 before commencing with IHC staining protocol.



Immunohistochemistry analysis of ARL6IP4 in paraffin-embedded human breast cancer using ARL6IP4 Rabbit pAb (A17154) at dilution of 1:100 (40x lens). Perform microwave antigen retrieval with 10 mM PBS buffer pH 7.2 before commencing with IHC staining protocol.