

# CYB5R1 Rabbit pAb

Catalog No.: A17160 **1 Publications**

## Basic Information

### Observed MW

34kDa

### Calculated MW

34kDa

### Category

Primary antibody

### Applications

ELISA, WB, IHC-P

### Cross-Reactivity

Human, Rat

## Background

Predicted to enable FAD binding activity. Predicted to be involved in bicarbonate transport. Located in extracellular exosome; membrane; and mitochondrion.

## Recommended Dilutions

WB 1:500 - 1:2000

IHC-P 1:50 - 1:200

## Immunogen Information

### Gene ID

51706

### Swiss Prot

Q9UHQ9

### Immunogen

Recombinant fusion protein containing a sequence corresponding to amino acids 1-305 of human CYB5R1 (NP\_057327.2).

### Synonyms

B5R1; B5R2; B5R.1; NQO3A2; humb5R2; CYB5R1

## Contact

☎ | 400-999-6126

✉ | [cn.market@abclonal.com.cn](mailto:cn.market@abclonal.com.cn)

🌐 | [www.abclonal.com.cn](http://www.abclonal.com.cn)

## Product Information

### Source

Rabbit

### Isotype

IgG

### Purification

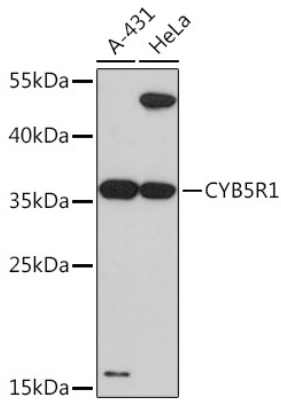
Affinity purification

### Storage

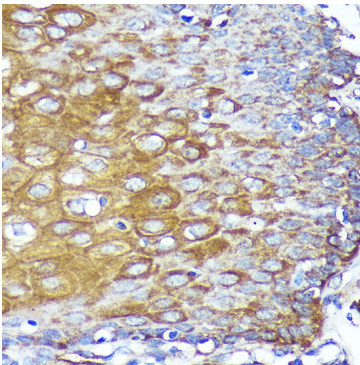
Store at -20°C. Avoid freeze / thaw cycles.

Buffer: PBS with 0.01% thimerosal, 50% glycerol, pH7.3.

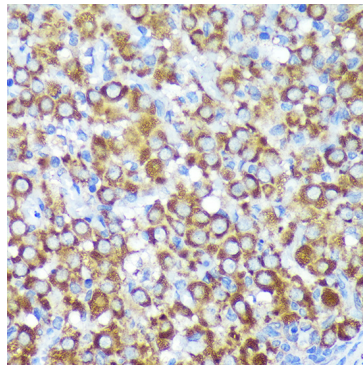
## Validation Data



Western blot analysis of various lysates using CYB5R1 Rabbit pAb (A17160) at 1:3000 dilution.  
Secondary antibody: HRP Goat Anti-Rabbit IgG (H+L) (AS014) at 1:10000 dilution.  
Lysates/proteins: 25µg per lane.  
Blocking buffer: 3% nonfat dry milk in TBST.  
Detection: ECL Basic Kit (RM00020).  
Exposure time: 90s.



Immunohistochemistry analysis of paraffin-embedded Human esophageal using CYB5R1 Rabbit pAb (A17160) at dilution of 1:100 (40x lens). Perform microwave antigen retrieval with 10 mM PBS buffer pH 7.2 before commencing with IHC staining protocol.



Immunohistochemistry analysis of paraffin-embedded Rat ovary using CYB5R1 Rabbit pAb (A17160) at dilution of 1:100 (40x lens). Perform microwave antigen retrieval with 10 mM PBS buffer pH 7.2 before commencing with IHC staining protocol.