

RAPGEF6 Rabbit pAb

Catalog No.: A17161

Basic Information

Observed MW

179kDa

Calculated MW

179kDa

Category

Primary antibody

Applications

ELISA, WB

Cross-Reactivity

Mouse, Rat

Background

Enables several functions, including GTP-dependent protein binding activity; guanyl-nucleotide exchange factor activity; and phosphatidic acid binding activity. Involved in microvillus assembly; positive regulation of GTPase activity; and protein localization to plasma membrane. Located in several cellular components, including apical plasma membrane; centrosome; and endocytic vesicle.

Recommended Dilutions

WB 1:500 - 1:2000

Immunogen Information

Gene ID

51735

Swiss Prot

Q8TEU7

Immunogen

Recombinant fusion protein containing a sequence corresponding to amino acids 145-240 of human RAPGEF6 (NP_001157858).

Synonyms

RAGEF2; PDZGEF2; KIA001LB; PDZ-GEF2; RA-GEF-2; RAPGEF6

Contact

 | 400-999-6126

 | cn.market@abclonal.com.cn

 | www.abclonal.com.cn

Product Information

Source

Rabbit

Isotype

IgG

Purification

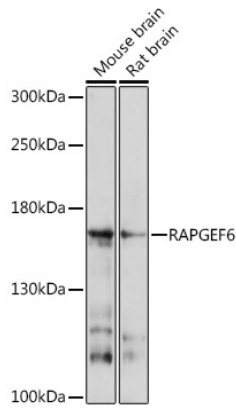
Affinity purification

Storage

Store at -20°C. Avoid freeze / thaw cycles.

Buffer: PBS with 0.01% thimerosal, 50% glycerol, pH7.3.

Validation Data



Western blot analysis of various lysates using RAPGEF6 Rabbit pAb (A17161) at 1:1000 dilution.
Secondary antibody: HRP Goat Anti-Rabbit IgG (H+L) (AS014) at 1:10000 dilution.
Lysates/proteins: 25 μ g per lane.
Blocking buffer: 3% nonfat dry milk in TBST.
Detection: ECL Basic Kit (RM00020).
Exposure time: 30s.