

# SERPING1 Rabbit pAb

Catalog No.: A1717

## Basic Information

### Observed MW

100kDa

### Calculated MW

55kDa

### Category

Primary antibody

### Applications

ELISA,WB,IF/ICC

### Cross-Reactivity

Human, Mouse, Rat

## Background

This gene encodes a highly glycosylated plasma protein involved in the regulation of the complement cascade. Its encoded protein, C1 inhibitor, inhibits activated C1r and C1s of the first complement component and thus regulates complement activation. It is synthesized in the liver, and its deficiency is associated with hereditary angioneurotic oedema (HANE). Alternative splicing results in multiple transcript variants encoding the same isoform.

## Recommended Dilutions

<b>WB</b>	1:500 - 1:1000
<b>IF/ICC</b>	1:50 - 1:200

## Immunogen Information

### Gene ID

710

### Swiss Prot

P05155

### Immunogen

Recombinant fusion protein containing a sequence corresponding to amino acids 201-500 of human SERPING1 (NP\_001027466.1).

### Synonyms

C1IN; C1NH; HAE1; HAE2; C1INH; SERPING1

## Contact

 | 400-999-6126

 | [cn.market@abclonal.com.cn](mailto:cn.market@abclonal.com.cn)

 | [www.abclonal.com.cn](http://www.abclonal.com.cn)

## Product Information

### Source

Rabbit

### Isotype

IgG

### Purification

Affinity purification

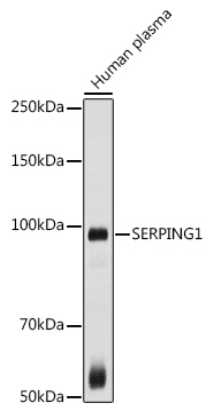
### Storage

Store at -20°C. Avoid freeze / thaw cycles.

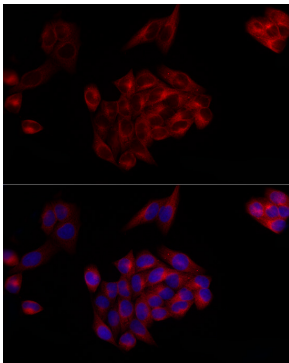
Buffer: PBS with 0.02% sodium azide,50% glycerol,pH7.3.

## Validation Data

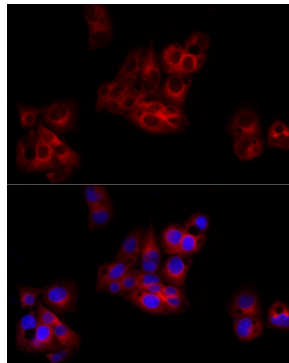
---



Western blot analysis of extracts of Human plasma, using SERPING1 antibody (A1717) at 1:1000 dilution.  
Secondary antibody: HRP Goat Anti-Rabbit IgG (H+L) (AS014) at 1:10000 dilution.  
Lysates/proteins: 25µg per lane.  
Blocking buffer: 3% nonfat dry milk in TBST.  
Detection: ECL Basic Kit (RM00020).  
Exposure time: 30s.



Immunofluorescence analysis of HeLa cells using SERPING1 Rabbit pAb (A1717) at dilution of 1:20 (40x lens). Blue: DAPI for nuclear staining.



Immunofluorescence analysis of HepG2 cells using SERPING1 Rabbit pAb (A1717) at dilution of 1:20 (40x lens). Blue: DAPI for nuclear staining.