

# PINX1 Rabbit pAb

Catalog No.: A17172

## Basic Information

### Observed MW

43kDa

### Calculated MW

37kDa

### Category

Primary antibody

### Applications

ELISA, WB

### Cross-Reactivity

Human

## Background

Enables telomerase RNA binding activity and telomerase inhibitor activity. Involved in several processes, including negative regulation of DNA biosynthetic process; positive regulation of protein localization to nucleolus; and protein localization to organelle. Acts upstream of or within telomere maintenance via telomerase. Located in several cellular components, including chromosomal region; nuclear lumen; and spindle.

## Recommended Dilutions

WB 1:500 - 1:2000

## Immunogen Information

### Gene ID

54984

### Swiss Prot

Q96BK5

### Immunogen

Recombinant fusion protein containing a sequence corresponding to amino acids 127-328 of human PINX1 (NP\_060354.4).

### Synonyms

Gno1; LPTL; LPTS; Pxr1; PINX1

## Contact

☎ | 400-999-6126

✉ | [cn.market@abclonal.com.cn](mailto:cn.market@abclonal.com.cn)

🌐 | [www.abclonal.com.cn](http://www.abclonal.com.cn)

## Product Information

### Source

Rabbit

### Isotype

IgG

### Purification

Affinity purification

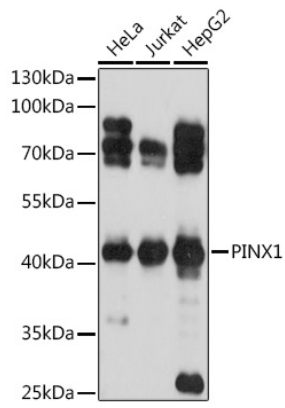
### Storage

Store at -20°C. Avoid freeze / thaw cycles.

Buffer: PBS with 0.01% thimerosal, 50% glycerol, pH7.3.

## Validation Data

---



Western blot analysis of various lysates using PINX1 Rabbit pAb (A17172) at 1:1000 dilution.  
Secondary antibody: HRP Goat Anti-Rabbit IgG (H+L) (AS014) at 1:10000 dilution.  
Lysates/proteins: 25µg per lane.  
Blocking buffer: 3% nonfat dry milk in TBST.  
Detection: ECL Basic Kit (RM00020).  
Exposure time: 10s.