

STX17 Rabbit pAb

Catalog No.: A17174

Basic Information

Observed MW

37kDa

Calculated MW

33kDa

Category

Primary antibody

Applications

WB,IF/ICC,ELISA

Cross-Reactivity

Human, Mouse

Background

Enables SNAP receptor activity; SNARE binding activity; and protein phosphatase binding activity. Involved in several processes, including autophagosome membrane docking; endoplasmic reticulum to Golgi vesicle-mediated transport; and endoplasmic reticulum-Golgi intermediate compartment organization. Acts upstream of or within protein localization to phagophore assembly site. Located in several cellular components, including autophagosome membrane; endoplasmic reticulum-Golgi intermediate compartment; and mitochondria-associated endoplasmic reticulum membrane. Part of SNARE complex. Colocalizes with HOPS complex.

Recommended Dilutions

WB 1:500 - 1:1000

IF/ICC 1:50 - 1:200

ELISA Recommended starting concentration is 1 µg/mL. Please optimize the concentration based on your specific assay requirements.

Immunogen Information

Gene ID

55014

Swiss Prot

P56962

Immunogen

Recombinant protein (or fragment). This information is considered to be commercially sensitive.

Synonyms

STX17

Contact

☎ | 400-999-6126

✉ | cn.market@abclonal.com.cn

🌐 | www.abclonal.com.cn

Product Information

Source

Rabbit

Isotype

IgG

Purification

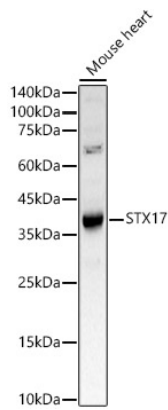
Affinity purification

Storage

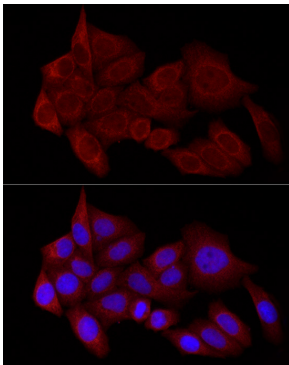
Store at -20°C. Avoid freeze / thaw cycles.

Buffer: PBS containing 50% glycerol, preserved with proclin300 or sodium azide (as specified on the Certificate of Analysis), pH 7.3.

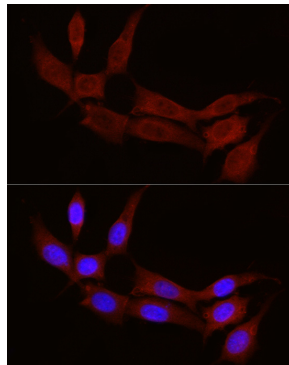
Validation Data



Western blot analysis of lysates from Mouse heart, using STX17 Rabbit pAb (A17174) at 1:1000 dilution.
Secondary antibody: HRP-conjugated Goat anti-Rabbit IgG (H+L) (AS014) at 1:10000 dilution.
Lysates/proteins: 25µg per lane.
Blocking buffer: 3% nonfat dry milk in TBST.
Detection: ECL Basic Kit (RM00020).
Exposure time: 30s.



Immunofluorescence analysis of HeLa cells using STX17 Rabbit pAb (A17174) at dilution of 1:100 (40x lens). Secondary antibody: Cy3-conjugated Goat anti-Rabbit IgG (H+L) (AS007) at 1:500 dilution. Blue: DAPI for nuclear staining.



Immunofluorescence analysis of NIH/3T3 cells using STX17 Rabbit pAb (A17174) at dilution of 1:100 (40x lens). Secondary antibody: Cy3-conjugated Goat anti-Rabbit IgG (H+L) (AS007) at 1:500 dilution. Blue: DAPI for nuclear staining.