

PPP6R3 Rabbit pAb

Catalog No.: A17177 **1 Publications**

Basic Information

Observed MW

140kDa

Calculated MW

98kDa

Category

Primary antibody

Applications

ELISA, WB

Cross-Reactivity

Human, Mouse, Rat

Background

Protein phosphatase regulatory subunits, such as SAPS3, modulate the activity of protein phosphatase catalytic subunits by restricting substrate specificity, recruiting substrates, and determining the intracellular localization of the holoenzyme. SAPS3 is a regulatory subunit for the protein phosphatase-6 catalytic subunit (PPP6C; MIM 612725) (Stefansson and Brautigam, 2006 [PubMed 16769727]).

Recommended Dilutions

WB 1:500 - 1:2000

Immunogen Information

Gene ID

55291

Swiss Prot

Q5H9R7

Immunogen

Recombinant fusion protein containing a sequence corresponding to amino acids 1-260 of human PPP6R3 (NP_060782.2).

Synonyms

SAPL; PP6R3; SAPLa; SAPS3; SAP190; C11orf23; PPP6R3

Contact

☎ | 400-999-6126

✉ | cn.market@abclonal.com.cn

🌐 | www.abclonal.com.cn

Product Information

Source

Rabbit

Isotype

IgG

Purification

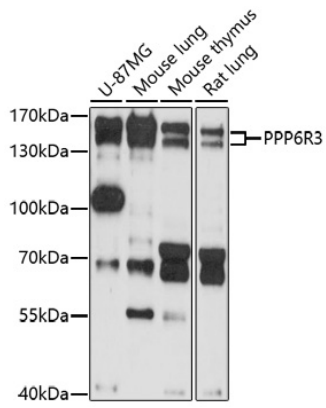
Affinity purification

Storage

Store at -20°C. Avoid freeze / thaw cycles.

Buffer: PBS with 0.01% thimerosal, 50% glycerol, pH7.3.

Validation Data



Western blot analysis of various lysates using PPP6R3 Rabbit pAb (A17177) at 1:1000 dilution.
Secondary antibody: HRP Goat Anti-Rabbit IgG (H+L) (AS014) at 1:10000 dilution.
Lysates/proteins: 25µg per lane.
Blocking buffer: 3% nonfat dry milk in TBST.
Detection: ECL Basic Kit (RM00020).
Exposure time: 90s.