

SLC2A4RG Rabbit pAb

Catalog No.: A17187

Basic Information

Observed MW

44kDa

Calculated MW

41kDa

Category

Primary antibody

Applications

ELISA, WB

Cross-Reactivity

Mouse

Background

The protein encoded by this gene is a nuclear transcription factor involved in the activation of the solute carrier family 2 member 4 gene. The encoded protein interacts with another transcription factor, myocyte enhancer factor 2, to activate transcription of this gene.

Recommended Dilutions

WB 1:500 - 1:2000

Immunogen Information

Gene ID

56731

Swiss Prot

Q9NR83

Immunogen

A synthetic peptide corresponding to a sequence within amino acids 100-200 of human SLC2A4RG (NP_064446.2).

Synonyms

GEF; HDBP1; HDBP-1; Si-1-2; Si-1-2-19; SLC2A4RG

Contact

 | 400-999-6126

 | cn.market@abclonal.com.cn

 | www.abclonal.com.cn

Product Information

Source

Rabbit

Isotype

IgG

Purification

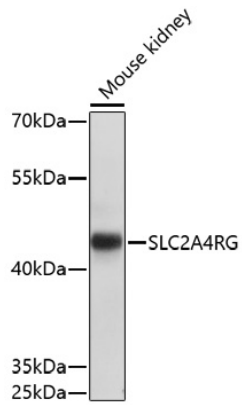
Affinity purification

Storage

Store at -20°C. Avoid freeze / thaw cycles.

Buffer: PBS with 0.01% thimerosal, 50% glycerol, pH7.3.

Validation Data



Western blot analysis of lysates from mouse kidney, using SLC2A4RG Rabbit pAb (A17187) at 1:1000 dilution.

Secondary antibody: HRP Goat Anti-Rabbit IgG (H+L) (AS014) at 1:10000 dilution.

Lysates/proteins: 25µg per lane.

Blocking buffer: 3% nonfat dry milk in TBST.

Detection: ECL Basic Kit (RM00020).

Exposure time: 10s.