

# CELA2A Rabbit pAb

Catalog No.: A17200

## Basic Information

### Observed MW

29kDa

### Calculated MW

29kDa

### Category

Primary antibody

### Applications

ELISA, WB, IF/ICC

### Cross-Reactivity

Mouse, Rat

## Background

Elastases form a subfamily of serine proteases that hydrolyze many proteins in addition to elastin. Humans have six elastase genes which encode the structurally similar proteins elastase 1, 2, 2A, 2B, 3A, and 3B. Like most of the human elastases, elastase 2A is secreted from the pancreas as a zymogen. In other species, elastase 2A has been shown to preferentially cleave proteins after leucine, methionine, and phenylalanine residues.

## Recommended Dilutions

<b>WB</b>	1:500 - 1:2000
<b>IF/ICC</b>	1:50 - 1:200

## Immunogen Information

### Gene ID

63036

### Swiss Prot

P08217

### Immunogen

Recombinant fusion protein containing a sequence corresponding to amino acids 80-150 of human CELA2A (NP\_254275.1).

### Synonyms

PE-1; AOMS4; ELA2A; CELA2A

## Contact

☎ | 400-999-6126

✉ | [cn.market@abclonal.com.cn](mailto:cn.market@abclonal.com.cn)

🌐 | [www.abclonal.com.cn](http://www.abclonal.com.cn)

## Product Information

### Source

Rabbit

### Isotype

IgG

### Purification

Affinity purification

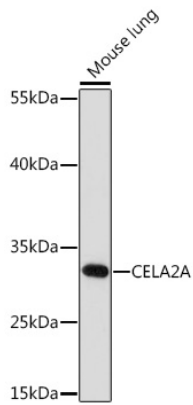
### Storage

Store at -20°C. Avoid freeze / thaw cycles.

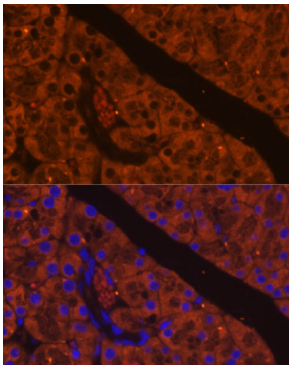
Buffer: PBS with 0.01% thimerosal, 50% glycerol, pH7.3.

## Validation Data

---



Western blot analysis of lysates from Mouse lung, using CELA2A Rabbit pAb (A17200) at 1:1000 dilution.  
Secondary antibody: HRP Goat Anti-Rabbit IgG (H+L) (AS014) at 1:10000 dilution.  
Lysates/proteins: 25µg per lane.  
Blocking buffer: 3% nonfat dry milk in TBST.  
Detection: ECL Basic Kit (RM00020).  
Exposure time: 90s.



Immunofluorescence analysis of paraffin-embedded mouse pancreas using CELA2A Rabbit pAb (A17200) at dilution of 1:100.  
Secondary antibody: Cy3 Goat Anti-Rabbit IgG (H+L) (AS007) at 1:500 dilution. Blue: DAPI for nuclear staining.