

UBE2O Rabbit pAb

Catalog No.: A17201

Basic Information

Observed MW

Refer to figures

Calculated MW

141kDa

Category

Primary antibody

Applications

ELISA, IHC-P

Cross-Reactivity

Human

Background

Enables ubiquitin conjugating enzyme activity and ubiquitin protein ligase activity. Involved in positive regulation of BMP signaling pathway; protein ubiquitination; and retrograde transport, endosome to Golgi. Located in cytoplasm and nuclear body.

Recommended Dilutions

IHC-P 1:50 - 1:200

Immunogen Information

Gene ID

63893

Swiss Prot

Q9C0C9

Immunogen

Recombinant fusion protein containing a sequence corresponding to amino acids 1073-1292 of human UBE2O (NP_071349.3).

Synonyms

E2-230K; UBE2O

Contact

☎ | 400-999-6126

✉ | cn.market@abclonal.com.cn

🌐 | www.abclonal.com.cn

Product Information

Source

Rabbit

Isotype

IgG

Purification

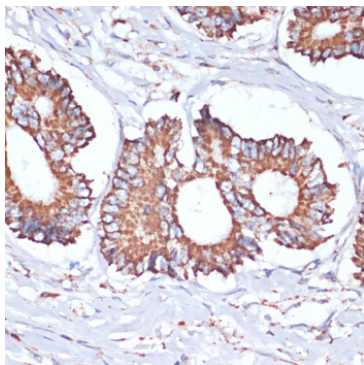
Affinity purification

Storage

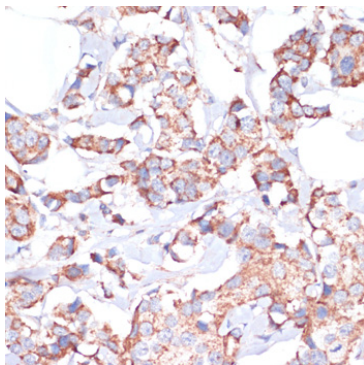
Store at -20°C. Avoid freeze / thaw cycles.

Buffer: PBS with 0.02% sodium azide, 50% glycerol, pH7.3.

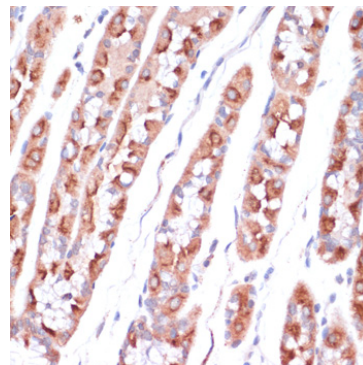
Validation Data



Immunohistochemistry analysis of paraffin-embedded human colon carcinoma using UBE2O antibody (A17201) at dilution of 1:100 (40x lens). Perform microwave antigen retrieval with 10 mM PBS buffer pH 7.2 before commencing with IHC staining protocol.



Immunohistochemistry analysis of paraffin-embedded human breast cancer using UBE2O antibody (A17201) at dilution of 1:100 (40x lens). Perform microwave antigen retrieval with 10 mM PBS buffer pH 7.2 before commencing with IHC staining protocol.



Immunohistochemistry analysis of paraffin-embedded human stomach using UBE2O antibody (A17201) at dilution of 1:100 (40x lens). Perform microwave antigen retrieval with 10 mM PBS buffer pH 7.2 before commencing with IHC staining protocol.