

TAS1R2 Rabbit pAb

Catalog No.: A17218 **1 Publications**

Basic Information

Observed MW

95kDa

Calculated MW

95kDa

Category

Primary antibody

Applications

ELISA, WB

Cross-Reactivity

Human

Background

Contributes to sweet taste receptor activity. Involved in detection of chemical stimulus involved in sensory perception of sweet taste and positive regulation of cytokinesis. Part of sweet taste receptor complex.

Recommended Dilutions

WB 1:500 - 1:2000

Immunogen Information

Gene ID

80834

Swiss Prot

Q8TE23

Immunogen

A synthetic peptide corresponding to a sequence within amino acids 450-550 of human TAS1R2 (NP_689418.2).

Synonyms

TR2; T1R2; GPR71; TAS1R2

Contact

☎ | 400-999-6126

✉ | cn.market@abclonal.com.cn

🌐 | www.abclonal.com.cn

Product Information

Source

Rabbit

Isotype

IgG

Purification

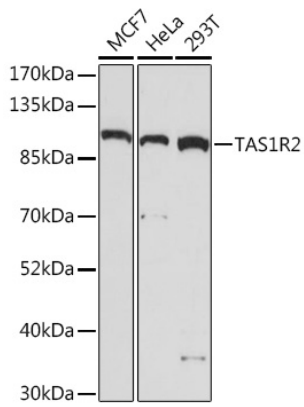
Affinity purification

Storage

Store at -20°C. Avoid freeze / thaw cycles.

Buffer: PBS with 0.01% thimerosal, 50% glycerol, pH7.3.

Validation Data



Western blot analysis of various lysates using TAS1R2 Rabbit pAb (A17218) at 1:1000 dilution.
Secondary antibody: HRP Goat Anti-Rabbit IgG (H+L) (AS014) at 1:10000 dilution.
Lysates/proteins: 25µg per lane.
Blocking buffer: 3% nonfat dry milk in TBST.
Detection: ECL Basic Kit (RM00020).
Exposure time: 5min.