

ANP32E Rabbit pAb

Catalog No.: A17220 **1 Publications**

Basic Information

Observed MW

31kDa

Calculated MW

31kDa

Category

Primary antibody

Applications

ELISA, WB

Cross-Reactivity

Human, Mouse, Rat

Background

Enables histone binding activity. Involved in histone exchange. Located in nucleus. Part of Swr1 complex.

Recommended Dilutions

WB 1:500 - 1:2000

Immunogen Information

Gene ID

81611

Swiss Prot

Q9BTT0

Immunogen

Recombinant fusion protein containing a sequence corresponding to amino acids 1-70 of human ANP32E (NP_112182.1).

Synonyms

LANPL; LANP-L; ANP32E

Contact

☎ | 400-999-6126

✉ | cn.market@abclonal.com.cn

🌐 | www.abclonal.com.cn

Product Information

Source

Rabbit

Isotype

IgG

Purification

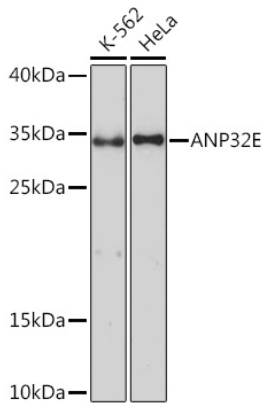
Affinity purification

Storage

Store at -20°C. Avoid freeze / thaw cycles.

Buffer: PBS with 0.01% thimerosal, 50% glycerol, pH7.3.

Validation Data



Western blot analysis of various lysates using ANP32E Rabbit pAb (A17220) at 1:1000 dilution.
Secondary antibody: HRP Goat Anti-Rabbit IgG (H+L) (AS014) at 1:10000 dilution.
Lysates/proteins: 25µg per lane.
Blocking buffer: 3% nonfat dry milk in TBST.
Detection: ECL Basic Kit (RM00020).
Exposure time: 10s.