

RPF2 Rabbit pAb

Catalog No.: A17224 **1 Publications**

Basic Information

Observed MW

36kDa

Calculated MW

36kDa

Category

Primary antibody

Applications

WB,ELISA

Cross-Reactivity

Human, Mouse, Rat

Background

Enables 5S rRNA binding activity. Involved in protein localization to nucleolus; regulation of signal transduction by p53 class mediator; and ribosomal large subunit biogenesis. Located in chromosome; nucleolus; and nucleoplasm.

Recommended Dilutions

WB 1:100 - 1:500

ELISA Recommended starting concentration is 1 µg/mL. Please optimize the concentration based on your specific assay requirements.

Immunogen Information

Gene ID

84154

Swiss Prot

Q9H7B2

Immunogen

Recombinant fusion protein containing a sequence corresponding to amino acids 1-306 of human RPF2 (NP_115570.1).

Synonyms

BXDC1; bA397G5.4; RPF2

Contact

 | 400-999-6126

 | cn.market@abclonal.com.cn

 | www.abclonal.com.cn

Product Information

Source

Rabbit

Isotype

IgG

Purification

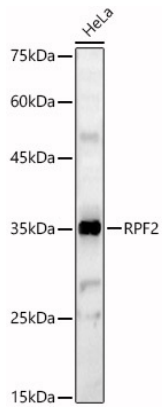
Affinity purification

Storage

Store at -20°C. Avoid freeze / thaw cycles.

Buffer: PBS with 0.05% proclin300,50% glycerol,pH7.3.

Validation Data



Western blot analysis of lysates from HeLa cells, using RPF2 Rabbit pAb (A17224) at 1:500 dilution.
Secondary antibody: HRP-conjugated Goat anti-Rabbit IgG (H+L) (AS014) at 1:10000 dilution.
Lysates/proteins: 25µg per lane.
Blocking buffer: 3% nonfat dry milk in TBST.
Detection: ECL Basic Kit (RM00020).
Exposure time: 60s.