

RETNLB Rabbit pAb

Catalog No.: A17228 **2 Publications**

Basic Information

Observed MW

13kDa

Calculated MW

12kDa

Category

Primary antibody

Applications

ELISA, WB

Cross-Reactivity

Human, Mouse

Background

Predicted to enable hormone activity. Involved in epithelial cell proliferation. Predicted to be located in extracellular region. Predicted to be active in extracellular space.

Recommended Dilutions

WB 1:500 - 1:2000

Immunogen Information

Gene ID

84666

Swiss Prot

Q9BQ08

Immunogen

Recombinant fusion protein containing a sequence corresponding to amino acids 1-111 of human RETNLB (NP_115968.1).

Synonyms

XCP2; FIZZ1; FIZZ2; HXCP2; RELMb; RELMbeta; RELM-beta; RETNLB

Contact

☎ | 400-999-6126

✉ | cn.market@abclonal.com.cn

🌐 | www.abclonal.com.cn

Product Information

Source

Rabbit

Isotype

IgG

Purification

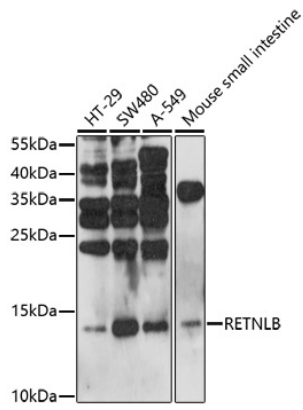
Affinity purification

Storage

Store at -20°C. Avoid freeze / thaw cycles.

Buffer: PBS with 0.01% thimerosal, 50% glycerol, pH7.3.

Validation Data



Western blot analysis of various lysates using RETNLB Rabbit pAb (A17228) at 1:1000 dilution.
Secondary antibody: HRP Goat Anti-Rabbit IgG (H+L) (AS014) at 1:10000 dilution.
Lysates/proteins: 25µg per lane.
Blocking buffer: 3% nonfat dry milk in TBST.
Detection: ECL Basic Kit (RM00020).
Exposure time: 90s.