

# PPP1R9B Rabbit pAb

Catalog No.: A17229

## Basic Information

### Observed MW

126kDa

### Calculated MW

89kDa

### Category

Primary antibody

### Applications

ELISA, WB

### Cross-Reactivity

Human, Mouse, Rat

## Background

This gene encodes a scaffold protein that functions as a regulatory subunit of protein phosphatase 1a. Expression of this gene is particularly high in dendritic spines, suggesting that the encoded protein may play a role in receiving signals from the central nervous system. The encoded protein has putative tumor suppressor function and decreased expression has been observed in tumors.

## Recommended Dilutions

WB 1:500 - 1:2000

## Immunogen Information

### Gene ID

84687

### Swiss Prot

Q96SB3

### Immunogen

A synthetic peptide corresponding to a sequence within amino acids 250-350 of human PPP1R9B (NP\_115984.3).

### Synonyms

Spn; SPINO; PPP1R6; PPP1R9; PPP1R9B

## Contact

☎ | 400-999-6126

✉ | [cn.market@abclonal.com.cn](mailto:cn.market@abclonal.com.cn)

🌐 | [www.abclonal.com.cn](http://www.abclonal.com.cn)

## Product Information

### Source

Rabbit

### Isotype

IgG

### Purification

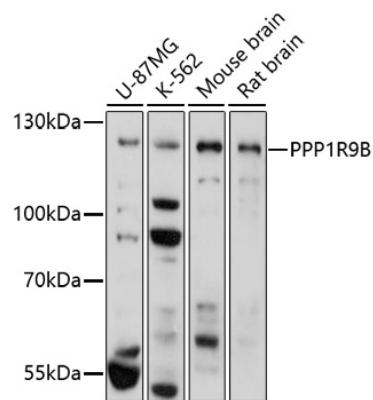
Affinity purification

### Storage

Store at -20°C. Avoid freeze / thaw cycles.

Buffer: PBS with 0.01% thimerosal, 50% glycerol, pH7.3.

Validation Data



Western blot analysis of various lysates using PPP1R9B Rabbit pAb (A17229) at 1:1000 dilution.  
Secondary antibody: HRP Goat Anti-Rabbit IgG (H+L) (AS014) at 1:10000 dilution.  
Lysates/proteins: 25µg per lane.  
Blocking buffer: 3% nonfat dry milk in TBST.  
Detection: ECL Basic Kit (RM00020).  
Exposure time: 3min.