

# ATOH8 Rabbit pAb

Catalog No.: A17232

## Basic Information

### Observed MW

35kDa

### Calculated MW

35kDa

### Category

Primary antibody

### Applications

ELISA, WB

### Cross-Reactivity

Mouse, Rat

## Background

Enables DNA-binding transcription factor activity and E-box binding activity. Involved in several processes, including SMAD protein signal transduction; positive regulation of endothelial cell differentiation; and regulation of gene expression. Located in nucleoplasm.

## Recommended Dilutions

WB 1:500 - 1:2000

## Immunogen Information

### Gene ID

84913

### Swiss Prot

Q96SQ7

### Immunogen

A synthetic peptide corresponding to a sequence within amino acids 150-250 of human ATOH8 (NP\_116216.2).

### Synonyms

HATH6; bHLHa21; ATOH8

## Contact

 | 400-999-6126

 | [cn.market@abclonal.com.cn](mailto:cn.market@abclonal.com.cn)

 | [www.abclonal.com.cn](http://www.abclonal.com.cn)

## Product Information

### Source

Rabbit

### Isotype

IgG

### Purification

Affinity purification

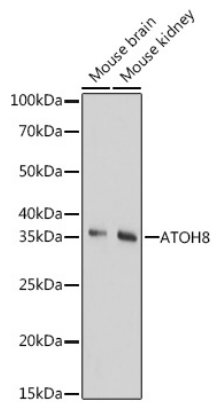
### Storage

Store at -20°C. Avoid freeze / thaw cycles.

Buffer: PBS with 0.01% thimerosal, 50% glycerol, pH7.3.

## Validation Data

---



Western blot analysis of various lysates using ATOH8 Rabbit pAb (A17232) at 1:1000 dilution.  
Secondary antibody: HRP Goat Anti-Rabbit IgG (H+L) (AS014) at 1:10000 dilution.  
Lysates/proteins: 25µg per lane.  
Blocking buffer: 3% nonfat dry milk in TBST.  
Detection: ECL Basic Kit (RM00020).  
Exposure time: 180s.