

ZCCHC3 Rabbit pAb

Catalog No.: A17235 **1 Publications**

Basic Information

Observed MW

43kDa

Calculated MW

44kDa

Category

Primary antibody

Applications

ELISA, WB, IF/ICC

Cross-Reactivity

Human, Mouse

Background

Enables double-stranded DNA binding activity. Involved in several processes, including cellular response to exogenous dsRNA; detection of virus; and positive regulation of RIG-I signaling pathway. Located in cytoplasm.

Recommended Dilutions

WB 1:500 - 1:2000

IF/ICC 1:50 - 1:200

Immunogen Information

Gene ID

85364

Swiss Prot

Q9NUD5

Immunogen

Recombinant fusion protein containing a sequence corresponding to amino acids 215-335 of human ZCCHC3 (NP_149080.2).

Synonyms

C20orf99; ZCCHC3

Contact

☎ | 400-999-6126

✉ | cn.market@abclonal.com.cn

🌐 | www.abclonal.com.cn

Product Information

Source

Rabbit

Isotype

IgG

Purification

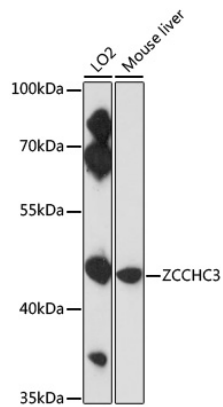
Affinity purification

Storage

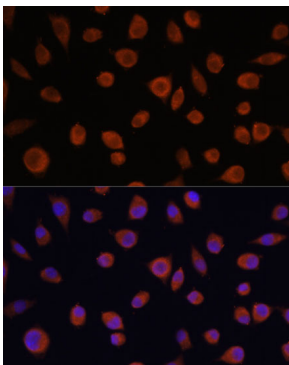
Store at -20°C. Avoid freeze / thaw cycles.

Buffer: PBS with 0.01% thimerosal, 50% glycerol, pH7.3.

Validation Data



Western blot analysis of various lysates using ZCCHC3 Rabbit pAb (A17235) at 1:3000 dilution.
Secondary antibody: HRP Goat Anti-Rabbit IgG (H+L) (AS014) at 1:10000 dilution.
Lysates/proteins: 25 μ g per lane.
Blocking buffer: 3% nonfat dry milk in TBST.
Detection: ECL Enhanced Kit (RM00021).
Exposure time: 30s.



Immunofluorescence analysis of L929 cells using ZCCHC3 Rabbit pAb (A17235) at dilution of 1:100. Secondary antibody: Cy3 Goat Anti-Rabbit IgG (H+L) (AS007) at 1:500 dilution. Blue: DAPI for nuclear staining.