

SLC24A4 Rabbit pAb

Catalog No.: A17254

Basic Information

Observed MW

69kDa

Calculated MW

69kDa

Category

Primary antibody

Applications

ELISA, WB

Cross-Reactivity

Human, Mouse, Rat

Background

Enables calcium, potassium:sodium antiporter activity. Involved in calcium ion transmembrane transport; potassium ion transmembrane transport; and sodium ion transmembrane transport. Acts upstream of or within cellular calcium ion homeostasis. Part of plasma membrane. Implicated in amelogenesis imperfecta hypomaturation type 2A5.

Recommended Dilutions

WB 1:500 - 1:2000

Immunogen Information

Gene ID

123041

Swiss Prot

Q8NFF2

Immunogen

A synthetic peptide corresponding to a sequence within amino acids 200-300 of human SLC24A4 (NP_705932.2).

Synonyms

AI2A5; NCKX4; SHEP6; SLC24A2; SLC24A4

Contact

 | 400-999-6126

 | cn.market@abclonal.com.cn

 | www.abclonal.com.cn

Product Information

Source

Rabbit

Isotype

IgG

Purification

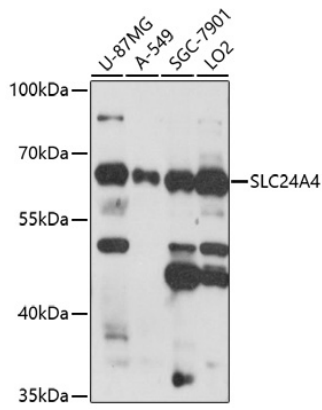
Affinity purification

Storage

Store at -20°C. Avoid freeze / thaw cycles.

Buffer: PBS with 0.01% thimerosal, 50% glycerol, pH7.3.

Validation Data



Western blot analysis of various lysates using SLC24A4 Rabbit pAb (A17254) at 1:1000 dilution.
Secondary antibody: HRP Goat Anti-Rabbit IgG (H+L) (AS014) at 1:10000 dilution.
Lysates/proteins: 25µg per lane.
Blocking buffer: 3% nonfat dry milk in TBST.
Detection: ECL Enhanced Kit (RM00021).
Exposure time: 90s.