

HTR1D Rabbit pAb

Catalog No.: A1726

Basic Information

Observed MW

50kDa

Calculated MW

42kDa

Category

Primary antibody

Applications

WB, ELISA

Cross-Reactivity

Human, Mouse, Rat

Background

Enables G protein-coupled serotonin receptor activity. Involved in adenylyl cyclase-inhibiting G protein-coupled receptor signaling pathway and intestine smooth muscle contraction. Is integral component of plasma membrane.

Recommended Dilutions

WB 1:500 - 1:2000

ELISA Recommended starting concentration is 1 µg/mL. Please optimize the concentration based on your specific assay requirements.

Immunogen Information

Gene ID

3352

Swiss Prot

P28221

Immunogen

Synthetic peptide. This information is considered to be commercially sensitive.

Synonyms

HTRL; RDC4; HT1DA; 5-HT1D; HTR1DA; HTR1D

Contact

☎ | 400-999-6126

✉ | cn.market@abclonal.com.cn

🌐 | www.abclonal.com.cn

Product Information

Source

Rabbit

Isotype

IgG

Purification

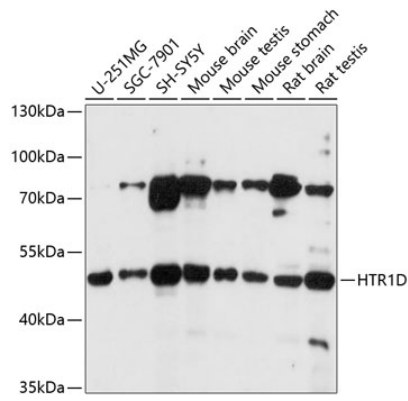
Affinity purification

Storage

Store at -20°C. Avoid freeze / thaw cycles.

Buffer: PBS with 0.01% thimerosal, 50% glycerol, pH7.3.

Validation Data



Western blot analysis of various lysates using HTR1D Rabbit pAb (A1726) at 1:1000 dilution.
Secondary antibody: HRP-conjugated Goat anti-Rabbit IgG (H+L) (AS014) at 1:10000 dilution.
Lysates/proteins: 25µg per lane.
Blocking buffer: 3% nonfat dry milk in TBST.
Detection: ECL Basic Kit (RM00020).
Exposure time: 10s.