

PDE12 Rabbit pAb

Catalog No.: A17270

Basic Information

Observed MW

67kDa

Calculated MW

67kDa

Category

Primary antibody

Applications

ELISA, WB, IF/ICC

Cross-Reactivity

Mouse, Rat

Background

Enables 3'-5'-exoribonuclease activity. Involved in several processes, including RNA metabolic process; cellular response to cytokine stimulus; and regulation of mitochondrial mRNA stability. Located in mitochondrial matrix.

Recommended Dilutions

WB	1:500 - 1:2000
IF/ICC	1:50 - 1:200

Immunogen Information

Gene ID

201626

Swiss Prot

Q6L8Q7

Immunogen

Recombinant fusion protein containing a sequence corresponding to amino acids 17-300 of human PDE12 (NP_001309106.1).

Synonyms

2-PDE; 2'-PDE; PDE12

Contact

 | 400-999-6126

 | cn.market@abclonal.com.cn

 | www.abclonal.com.cn

Product Information

Source

Rabbit

Isotype

IgG

Purification

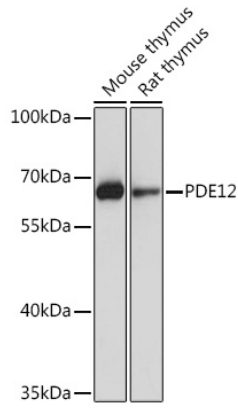
Affinity purification

Storage

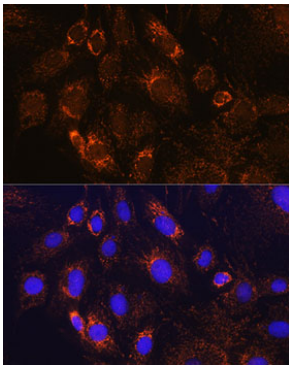
Store at -20°C. Avoid freeze / thaw cycles.

Buffer: PBS with 0.01% thimerosal, 50% glycerol, pH7.3.

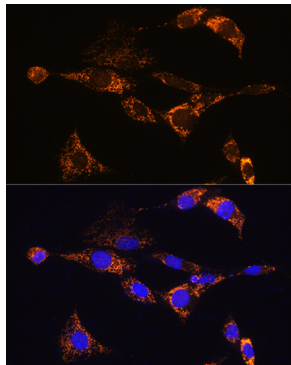
Validation Data



Western blot analysis of various lysates using PDE12 Rabbit pAb (A17270) at 1:1000 dilution. Secondary antibody: HRP Goat Anti-Rabbit IgG (H+L) (AS014) at 1:10000 dilution. Lysates/proteins: 25µg per lane. Blocking buffer: 3% nonfat dry milk in TBST. Detection: ECL Basic Kit (RM00020). Exposure time: 10s.



Immunofluorescence analysis of C6 cells using PDE12 Rabbit pAb (A17270) at dilution of 1:100. Secondary antibody: Cy3 Goat Anti-Rabbit IgG (H+L) (AS007) at 1:500 dilution. Blue: DAPI for nuclear staining.



Immunofluorescence analysis of NIH/3T3 cells using PDE12 Rabbit pAb (A17270) at dilution of 1:100. Secondary antibody: Cy3 Goat Anti-Rabbit IgG (H+L) (AS007) at 1:500 dilution. Blue: DAPI for nuclear staining.