

MAPK1/MAPK3 Rabbit pAb

Catalog No.: A17291

Basic Information

Observed MW

44kDa

Calculated MW

36kDa/41kDa/38kDa/40kDa/43kDa

Category

Primary antibody

Applications

ELISA, WB, IHC-P

Cross-Reactivity

Human, Mouse, Rat

Background

MAP kinases, also known as extracellular signal-regulated kinases (ERKs), act as an integration point for multiple biochemical signals, and are involved in a wide variety of cellular processes such as proliferation, differentiation, transcription regulation and development. The activation of this kinase requires its phosphorylation by upstream kinases. Upon activation, this kinase translocates to the nucleus of the stimulated cells, where it phosphorylates nuclear targets.

Recommended Dilutions

WB 1:500 - 1:2000

IHC-P 1:50 - 1:200

Immunogen Information

Gene ID

5594/5595

Swiss Prot

P28482/P27361

Immunogen

A synthetic peptide corresponding to a sequence within amino acids 200-300 of human MAPK1/MAPK3ERK1/2 (P27361/P28482).

Synonyms

MAPK1/MAPK3

Contact

☎ | 400-999-6126

✉ | cn.market@abclonal.com.cn

🌐 | www.abclonal.com.cn

Product Information

Source

Rabbit

Isotype

IgG

Purification

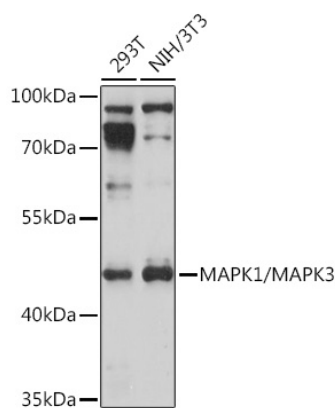
Affinity purification

Storage

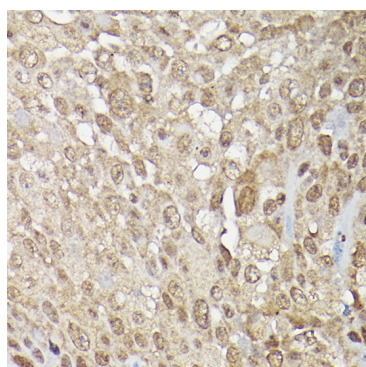
Store at -20°C. Avoid freeze / thaw cycles.

Buffer: PBS with 0.01% thimerosal, 50% glycerol, pH7.3.

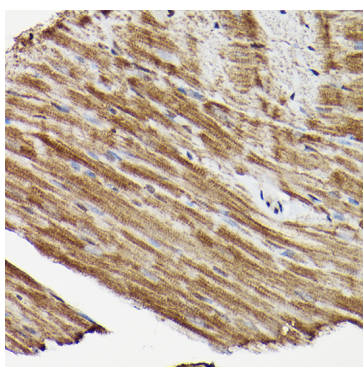
Validation Data



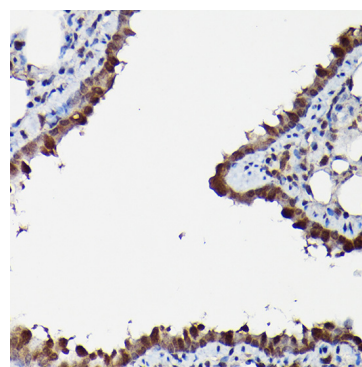
Western blot analysis of various lysates using MAPK1/MAPK3 Rabbit pAb (A17291) at 1:1000 dilution.
Secondary antibody: HRP Goat Anti-Rabbit IgG (H+L) (AS014) at 1:10000 dilution.
Lysates/proteins: 25µg per lane.
Blocking buffer: 3% nonfat dry milk in TBST.
Detection: ECL Basic Kit (RM00020).
Exposure time: 10s.



Immunohistochemistry analysis of MAPK1/MAPK3 in paraffin-embedded human urothelial carcinoma using MAPK1/MAPK3 Rabbit pAb (A17291) at dilution of 1:200 (40x lens). Perform high pressure antigen retrieval with 10 mM citrate buffer pH 6.0 before commencing with IHC staining protocol.



Immunohistochemistry analysis of MAPK1/MAPK3 in paraffin-embedded mouse heart using MAPK1/MAPK3 Rabbit pAb (A17291) at dilution of 1:200 (40x lens). Perform high pressure antigen retrieval with 10 mM citrate buffer pH 6.0 before commencing with IHC staining protocol.



Immunohistochemistry analysis of MAPK1/MAPK3 in paraffin-embedded rat lung using MAPK1/MAPK3 Rabbit pAb (A17291) at dilution of 1:200 (40x lens). Perform high pressure antigen retrieval with 10 mM citrate buffer pH 6.0 before commencing with IHC staining protocol.