

OLFM3 Rabbit pAb

Catalog No.: A17293

Basic Information

Observed MW

53kDa

Calculated MW

Category

Primary antibody

Applications

ELISA, WB

Cross-Reactivity

Human, Mouse, Rat

Background

Predicted to be involved in eye photoreceptor cell development. Located in Golgi apparatus and extracellular space. Part of AMPA glutamate receptor complex. Is expressed in brain; eye; and head. Orthologous to human OLFM3 (olfactomedin 3).

Recommended Dilutions

WB 1:500 - 1:2000

Immunogen Information

Gene ID

229759

Swiss Prot

Immunogen

A synthetic peptide corresponding to a sequence within amino acids 200-300 of mouse OLFM3 (NP_694797.1).

Synonyms

B230206G02Rik; OLFM3

Contact

☎ | 400-999-6126

✉ | cn.market@abclonal.com.cn

🌐 | www.abclonal.com.cn

Product Information

Source

Rabbit

Isotype

IgG

Purification

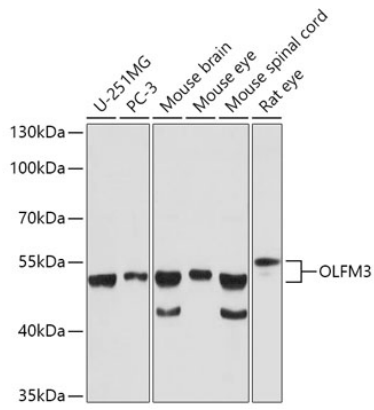
Affinity purification

Storage

Store at -20°C. Avoid freeze / thaw cycles.

Buffer: PBS with 0.01% thimerosal, 50% glycerol, pH7.3.

Validation Data



Western blot analysis of various lysates using OLFM3 Rabbit pAb (A17293) at 1:1000 dilution.
Secondary antibody: HRP Goat Anti-Rabbit IgG (H+L) (AS014) at 1:10000 dilution.
Lysates/proteins: 25µg per lane.
Blocking buffer: 3% nonfat dry milk in TBST.
Detection: ECL Basic Kit (RM00020).
Exposure time: 10s.