

# CAMP Rabbit pAb

Catalog No.: A17298

## Basic Information

### Observed MW

Refer to figures

### Calculated MW

19kDa

### Category

Primary antibody

### Applications

ELISA, IHC-P, IF/ICC

### Cross-Reactivity

Human, Rat

## Background

This gene encodes a member of an antimicrobial peptide family, characterized by a highly conserved N-terminal signal peptide containing a cathelin domain and a structurally variable cationic antimicrobial peptide, which is produced by extracellular proteolysis from the C-terminus. The protein plays an important role in innate immunity defense against viruses. In addition to its antibacterial, antifungal, and antiviral activities, the encoded protein functions in cell chemotaxis, immune mediator induction, and inflammatory response regulation.

## Recommended Dilutions

IHC-P 1:50 - 1:200

IF/ICC 1:50 - 1:200

## Immunogen Information

### Gene ID

820

### Swiss Prot

P49913

### Immunogen

A synthetic peptide corresponding to a sequence within amino acids 100-170 of human CAMP (NP\_004336.4).

### Synonyms

LL37; CAP18; CRAMP; HSD26; CAP-18; FALL39; FALL-39; CAMP

## Contact

☎ | 400-999-6126

✉ | [cn.market@abclonal.com.cn](mailto:cn.market@abclonal.com.cn)

🌐 | [www.abclonal.com.cn](http://www.abclonal.com.cn)

## Product Information

### Source

Rabbit

### Isotype

IgG

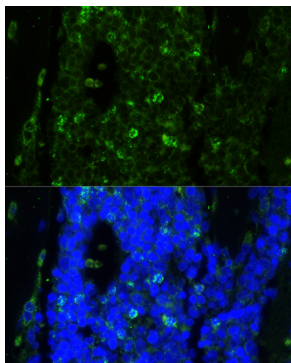
### Purification

Affinity purification

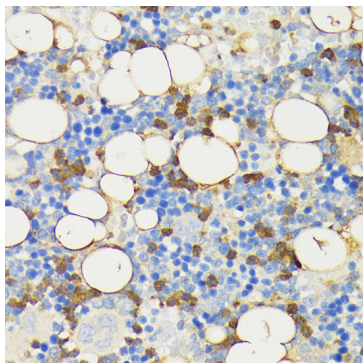
### Storage

Store at -20°C. Avoid freeze / thaw cycles.

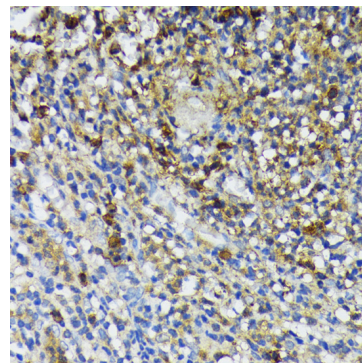
Buffer: PBS with 0.01% thimerosal, 50% glycerol, pH7.3.



Immunofluorescence analysis of paraffin-embedded rat bone marrow using CAMP Rabbit pAb (A17298) at dilution of 1:100. Secondary antibody: Cy3 Goat Anti-Rabbit IgG (H+L) (AS007) at 1:500 dilution. Blue: DAPI for nuclear staining.



Immunohistochemistry analysis of CAMP in paraffin-embedded rat bone marrow using CAMP Rabbit pAb (A17298) at dilution of 1:200 (40x lens). Perform microwave antigen retrieval with 10 mM PBS buffer pH 7.2 before commencing with IHC staining protocol.



Immunohistochemistry analysis of CAMP in paraffin-embedded human appendix using CAMP Rabbit pAb (A17298) at dilution of 1:200 (40x lens). Perform microwave antigen retrieval with 10 mM PBS buffer pH 7.2 before commencing with IHC staining protocol.