

DEPDC6 Rabbit pAb

Catalog No.: A17305

Basic Information

Observed MW

Refer to figures

Calculated MW

46kDa

Category

Primary antibody

Applications

ELISA, WB, IHC-P

Cross-Reactivity

Human, Mouse, Rat

Background

Involved in several processes, including negative regulation of TOR signaling; negative regulation of cell size; and negative regulation of protein kinase activity.

Recommended Dilutions

WB 1:500 - 1:2000

IHC-P 1:50 - 1:100

Immunogen Information

Gene ID

64798

Swiss Prot

Q8TB45

Immunogen

Recombinant fusion protein containing a sequence corresponding to amino acids 1-220 of human DEPDC6 (NP_073620.2).

Synonyms

DEP.6; DEPDC6

Contact

☎ | 400-999-6126

✉ | cn.market@abclonal.com.cn

🌐 | www.abclonal.com.cn

Product Information

Source

Rabbit

Isotype

IgG

Purification

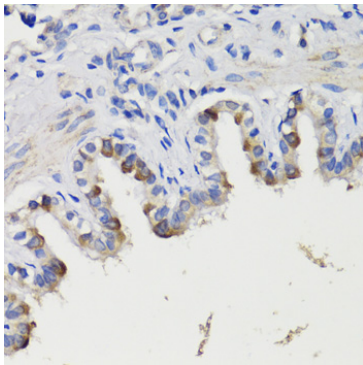
Affinity purification

Storage

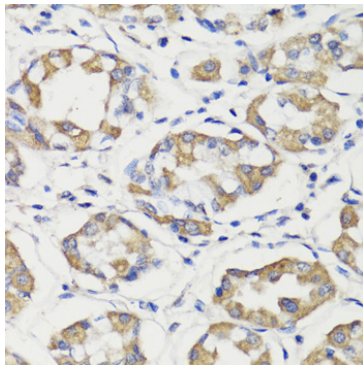
Store at -20°C. Avoid freeze / thaw cycles.

Buffer: PBS with 0.01% thimerosal, 50% glycerol, pH7.3.

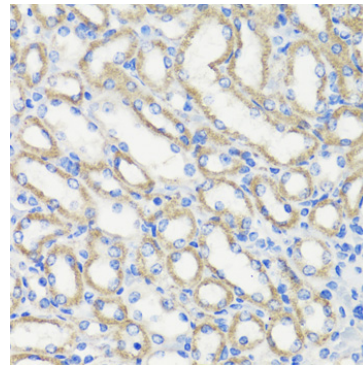
Validation Data



Immunohistochemistry analysis of paraffin-embedded rat bronchus using DEPDC6 Rabbit pAb (A17305) at dilution of 1:200 (40x lens). Perform microwave antigen retrieval with 10 mM PBS buffer pH 7.2 before commencing with IHC staining protocol.



Immunohistochemistry analysis of paraffin-embedded human stomach using DEPDC6 Rabbit pAb (A17305) at dilution of 1:200 (40x lens). Perform microwave antigen retrieval with 10 mM PBS buffer pH 7.2 before commencing with IHC staining protocol.



Immunohistochemistry analysis of paraffin-embedded mouse kidney using DEPDC6 Rabbit pAb (A17305) at dilution of 1:200 (40x lens). Perform microwave antigen retrieval with 10 mM PBS buffer pH 7.2 before commencing with IHC staining protocol.