

# Interferon alpha 2 (IFN- $\alpha$ 2) Rabbit pAb

**Catalog No.: A17316**

## Basic Information

**Observed MW**

15kDa

**Calculated MW**

22kDa

**Category**

Primary antibody

**Applications**

ELISA, WB

**Cross-Reactivity**

Human, Mouse

## Background

This gene is a member of the alpha interferon gene cluster on chromosome 9. The encoded cytokine is a member of the type I interferon family that is produced in response to viral infection as a key part of the innate immune response with potent antiviral, antiproliferative and immunomodulatory properties. This cytokine, like other type I interferons, binds a plasma membrane receptor made of IFNAR1 and IFNAR2 that is ubiquitously expressed, and thus is able to act on virtually all body cells. The encoded protein is effective in reducing the symptoms and duration of the common cold and in treating many types of cancer, including some hematological malignancies and solid tumors. A deficiency of type I interferon in the blood is thought to be a hallmark of severe COVID-19 and may provide a rationale for a combined therapeutic approach.

## Recommended Dilutions

**WB** 1:500 - 1:2000

## Immunogen Information

**Gene ID**

3440

**Swiss Prot**

P01563

**Immunogen**

A synthetic peptide corresponding to a sequence within amino acids 100 to the C-terminus of human Interferon alpha 2 (IFN- $\alpha$ 2) (NP\_000596.2).

**Synonyms**IFNA; IFNA2B; IeIF A; IFN-alphaA; IFN-alpha-2; Interferon alpha 2 (IFN- $\alpha$ 2)

## Contact

 | 400-999-6126 | [cn.market@abclonal.com.cn](mailto:cn.market@abclonal.com.cn) | [www.abclonal.com.cn](http://www.abclonal.com.cn)

## Product Information

**Source**

Rabbit

**Isotype**

IgG

**Purification**

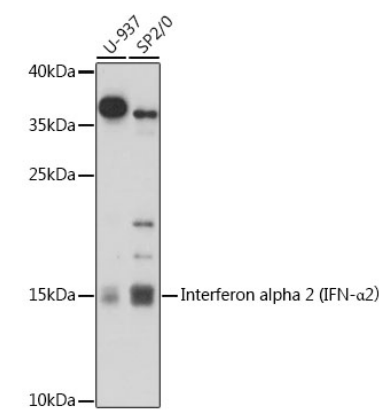
Affinity purification

**Storage**

Store at -20°C. Avoid freeze / thaw cycles.

Buffer: PBS with 0.01% thimerosal, 50% glycerol, pH7.3.

# Validation Data



Western blot analysis of various lysates using Interferon alpha 2 (IFN-α2) Rabbit pAb (A17316) at 1:1000 dilution.  
Secondary antibody: HRP Goat Anti-Rabbit IgG (H+L) (AS014) at 1:10000 dilution.  
Lysates/proteins: 25µg per lane.  
Blocking buffer: 3% nonfat dry milk in TBST.  
Detection: ECL Basic Kit (RM00020).  
Exposure time: 90s.