

UBA2 Rabbit pAb

Catalog No.: A17342

Basic Information

Observed MW

90kDa

Calculated MW

71kDa

Category

Primary antibody

Applications

ELISA, WB

Cross-Reactivity

Rat

Background

Posttranslational modification of proteins by the addition of the small protein SUMO (see SUMO1; MIM 601912), or sumoylation, regulates protein structure and intracellular localization. SAE1 (MIM 613294) and UBA2 form a heterodimer that functions as a SUMO-activating enzyme for the sumoylation of proteins (Okuma et al., 1999 [PubMed 9920803]).

Recommended Dilutions

WB 1:500 - 1:1000

Immunogen Information

Gene ID

10054

Swiss Prot

Q9UBT2

Immunogen

Recombinant fusion protein containing a sequence corresponding to amino acids 60-160 of human UBA2 (NP_005490.1).

Synonyms

ARX; SAE2; ACCES; HRIHFB2115; UBA2

Contact

☎ | 400-999-6126

✉ | cn.market@abclonal.com.cn

🌐 | www.abclonal.com.cn

Product Information

Source

Rabbit

Isotype

IgG

Purification

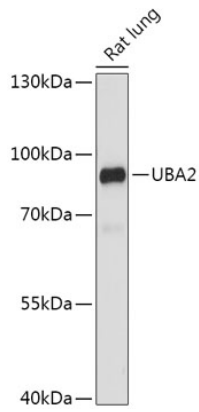
Affinity purification

Storage

Store at -20°C. Avoid freeze / thaw cycles.

Buffer: PBS with 0.01% thimerosal, 50% glycerol, pH7.3.

Validation Data



Western blot analysis of lysates from Rat lung, using UBA2 Rabbit pAb (A17342) at 1:1000 dilution.
Secondary antibody: HRP Goat Anti-Rabbit IgG (H+L) (AS014) at 1:10000 dilution.
Lysates/proteins: 25µg per lane.
Blocking buffer: 3% nonfat dry milk in TBST.
Detection: ECL Basic Kit (RM00020).
Exposure time: 10s.