

KCNMA1 Rabbit pAb

Catalog No.: A17354

Basic Information

Observed MW

138kDa

Calculated MW

138kDa

Category

Primary antibody

Applications

WB

Cross-Reactivity

Human

Background

This gene encodes the alpha subunit of calcium-activated BK channel. The encoded protein is involved in several physiological processes including smooth muscle contraction, neurotransmitter release and neuronal excitability. Mutations in this gene are associated with a spectrum of neurological disorders including Paroxysmal Nonkinesigenic Dyskinesia 3, Idiopathic Generalized Epilepsy 16 and Liang-Wang syndrome.

Recommended Dilutions

WB 1:200 - 1:2000

Immunogen Information

Gene ID

3778

Swiss Prot

Q12791

Immunogen

A synthetic peptide of human KCNMA1.

Synonyms

SLO; BKTM; SLO1; hSlo; IEG16; LIWAS; MaxiK; PNKD3; SAKCA; mSLO1; CADEDS; KCa1.1; SLO-ALPHA; bA205K10.1; KCNMA1

Contact

☎ | 400-999-6126

✉ | cn.market@abclonal.com.cn

🌐 | www.abclonal.com.cn

Product Information

Source

Rabbit

Isotype

IgG

Purification

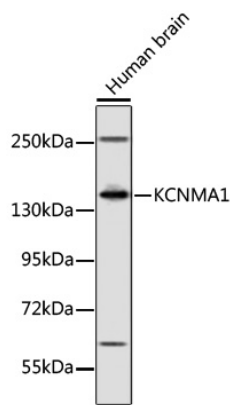
Affinity purification

Storage

Store at 4°C. Avoid freeze / thaw cycles.

Buffer: PBS with 0.02% sodium azide, pH7.3.

Validation Data



Western blot analysis of lysates from human brain, using KCNMA1 Rabbit pAb (A17354) at dilution.
Secondary antibody: HRP Goat Anti-Rabbit IgG (H+L) (AS014) at 1:10000 dilution.
Lysates/proteins: 25µg per lane.
Blocking buffer: 3% nonfat dry milk in TBST.