

MOBP Rabbit pAb

Catalog No.: A17355 **1 Publications**

Basic Information

Observed MW

59kDa

Calculated MW

21kDa

Category

Primary antibody

Applications

ELISA, WB

Cross-Reactivity

Human, Mouse, Rat

Background

Predicted to enable actin binding activity and myosin binding activity. Predicted to be a structural constituent of myelin sheath. Predicted to be involved in nervous system development. Predicted to be located in mitochondrion. Predicted to be active in cortical actin cytoskeleton. Implicated in frontotemporal dementia.

Recommended Dilutions

WB 1:500 - 1:1000

Immunogen Information

Gene ID

4336

Swiss Prot

Q13875

Immunogen

Recombinant fusion protein containing a sequence corresponding to amino acids 1-70 of human MOBP (NP_891980.1).

Synonyms

MOBP

Contact

☎ | 400-999-6126

✉ | cn.market@abclonal.com.cn

🌐 | www.abclonal.com.cn

Product Information

Source

Rabbit

Isotype

IgG

Purification

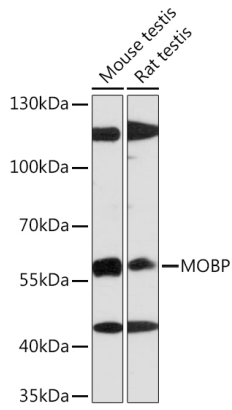
Affinity purification

Storage

Store at -20°C. Avoid freeze / thaw cycles.

Buffer: PBS with 0.01% thimerosal, 50% glycerol, pH7.3.

Validation Data



Western blot analysis of various lysates using MOBP Rabbit pAb (A17355) at 1:1000 dilution.
Secondary antibody: HRP Goat Anti-Rabbit IgG (H+L) (AS014) at 1:10000 dilution.
Lysates/proteins: 25µg per lane.
Blocking buffer: 3% nonfat dry milk in TBST.
Detection: ECL Enhanced Kit (RM00021).
Exposure time: 90s.