

# SIX3 Rabbit pAb

Catalog No.: A17363 **1 Publications**

## Basic Information

### Observed MW

35kDa

### Calculated MW

35kDa

### Category

Primary antibody

### Applications

ELISA, WB

### Cross-Reactivity

Human, Mouse, Rat

## Background

This gene encodes a member of the sine oculis homeobox transcription factor family. The encoded protein plays a role in eye development. Mutations in this gene have been associated with holoprosencephaly type 2.

## Recommended Dilutions

WB 1:500 - 1:1000

## Immunogen Information

### Gene ID

6496

### Swiss Prot

O95343

### Immunogen

A synthetic peptide corresponding to a sequence within amino acids 250-336 of human SIX3 (NP\_005404.1).

### Synonyms

HPE2; SIX3

## Contact

 | 400-999-6126

 | [cn.market@abclonal.com.cn](mailto:cn.market@abclonal.com.cn)

 | [www.abclonal.com.cn](http://www.abclonal.com.cn)

## Product Information

### Source

Rabbit

### Isotype

IgG

### Purification

Affinity purification

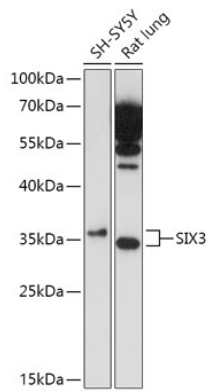
### Storage

Store at -20°C. Avoid freeze / thaw cycles.

Buffer: PBS with 0.01% thimerosal, 50% glycerol, pH7.3.

## Validation Data

---



Western blot analysis of various lysates using SIX3 Rabbit pAb (A17363) at 1:1000 dilution.  
Secondary antibody: HRP Goat Anti-Rabbit IgG (H+L) (AS014) at 1:10000 dilution.  
Lysates/proteins: 25µg per lane.  
Blocking buffer: 3% nonfat dry milk in TBST.  
Detection: ECL Enhanced Kit (RM00021).  
Exposure time: 3min.