

# CA19-9 Mouse mAb

Catalog No.: A17437

## Basic Information

### Observed MW

Refer to figures

### Calculated MW

### Category

Primary antibody

### Applications

ELISA, IHC-P, IF/ICC

### Cross-Reactivity

Human

### CloneNo number

AMC0043

## Background

CA 19-9 (carbohydrate antigen 19-9, also called cancer antigen 19-9 or sialylated Lewis (a) antigen) is a tumor marker that is used primarily in the management of pancreatic cancer. CA 19-9 is an antigen defined by monoclonal antibody binding to CA 19-9, the tumor surface marker Sialyl-Lewis A.

## Recommended Dilutions

IHC-P	1:50 - 1:200
IF/ICC	1:50 - 1:200

## Immunogen Information

### Gene ID

Swiss Prot

### Immunogen

Human colon carcinoma cell line SW1116

### Synonyms

## Contact

☎ | 400-999-6126

✉ | [cn.market@abclonal.com.cn](mailto:cn.market@abclonal.com.cn)

🌐 | [www.abclonal.com.cn](http://www.abclonal.com.cn)

## Product Information

### Source

Mouse

### Isotype

IgM, Kappa

### Purification

Affinity purification

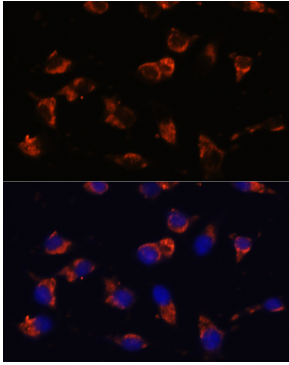
### Storage

Store at -20°C. Avoid freeze / thaw cycles.

Buffer: PBS with 0.01% thimerosal, 50% glycerol, pH 7.3.

## Validation Data

---



Immunofluorescence analysis of SW480 cells using CA19-9 Mouse mAb (A17437) at dilution of 1:100. Blue: DAPI for nuclear staining.