

COL9A2 Rabbit pAb

Catalog No.: A17461

Basic Information

Observed MW

65kDa

Calculated MW

65kDa

Category

Primary antibody

Applications

ELISA, WB

Cross-Reactivity

Rat

Background

This gene encodes one of the three alpha chains of type IX collagen, the major collagen component of hyaline cartilage. Type IX collagen, a heterotrimeric molecule, is usually found in tissues containing type II collagen, a fibrillar collagen. This chain is unusual in that, unlike the other two type IX alpha chains, it contains a covalently attached glycosaminoglycan side chain. Mutations in this gene are associated with multiple epiphyseal dysplasia.

Recommended Dilutions

WB 1:500 - 1:2000

Immunogen Information

Gene ID

1298

Swiss Prot

Q14055

Immunogen

A synthetic peptide corresponding to a sequence within amino acids 600-689 of human COL9A2 (NP_001843.1).

Synonyms

MED; EDM2; STL5; DJ39G22.4; COL9A2

Contact

☎ | 400-999-6126

✉ | cn.market@abclonal.com.cn

🌐 | www.abclonal.com.cn

Product Information

Source

Rabbit

Isotype

IgG

Purification

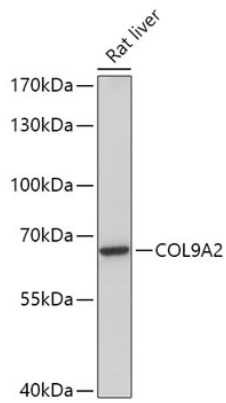
Affinity purification

Storage

Store at -20°C. Avoid freeze / thaw cycles.

Buffer: PBS with 0.01% thimerosal, 50% glycerol, pH7.3.

Validation Data



Western blot analysis of lysates from Rat liver, using COL9A2 Rabbit pAb (A17461) at 1:1000 dilution.
Secondary antibody: HRP Goat Anti-Rabbit IgG (H+L) (AS014) at 1:10000 dilution.
Lysates/proteins: 25µg per lane.
Blocking buffer: 3% nonfat dry milk in TBST.
Detection: ECL Basic Kit (RM00020).
Exposure time: 5min.