

Septin 1 Rabbit pAb

Catalog No.: A17471 **1 Publications**

Basic Information

Observed MW

48kDa

Calculated MW

42kDa

Category

Primary antibody

Applications

ELISA, WB, IHC-P

Cross-Reactivity

Human, Mouse, Rat

Background

This gene is a member of the septin family of GTPases. Members of this family are required for cytokinesis and the maintenance of cellular morphology. This gene encodes a protein that can form homo- and heterooligomeric filaments, and may contribute to the formation of neurofibrillary tangles in Alzheimer's disease. Alternatively spliced transcript variants have been found but the full-length nature of these variants has not been determined.

Recommended Dilutions

WB	1:500 - 1:1000
IHC-P	1:50 - 1:100

Immunogen Information

Gene ID

1731

Swiss Prot

Q8WYJ6

Immunogen

Recombinant fusion protein containing a sequence corresponding to amino acids 270-370 of human Septin 1 (NP_443070.5).

Synonyms

LARP; SEP1; DIFF6; SEPT1; PNUTL3; Septin 1

Contact

	400-999-6126
	cn.market@abclonal.com.cn
	www.abclonal.com.cn

Product Information

Source

Rabbit

Isotype

IgG

Purification

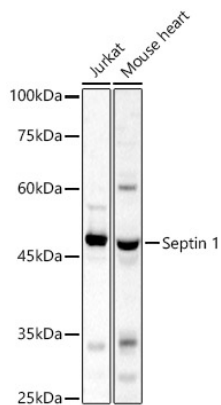
Affinity purification

Storage

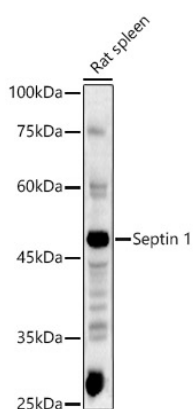
Store at -20°C. Avoid freeze / thaw cycles.

Buffer: PBS with 0.01% thimerosal, 50% glycerol, pH7.3.

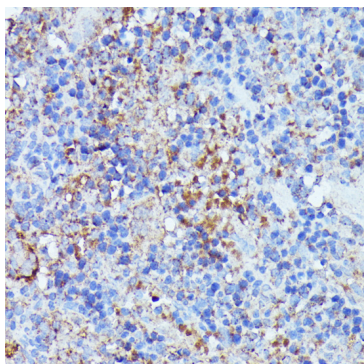
Validation Data



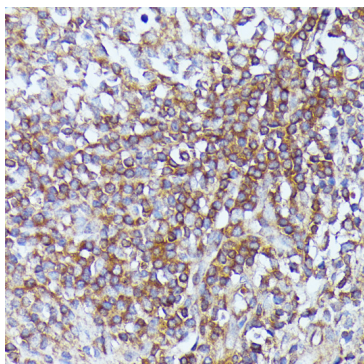
Western blot analysis of various lysates, using Septin 1 Rabbit pAb (A17471) at 1:1000 dilution.
Secondary antibody: HRP Goat Anti-Rabbit IgG (H+L) (AS014) at 1:10000 dilution.
Lysates/proteins: 25µg per lane.
Blocking buffer: 3% nonfat dry milk in TBST.
Detection: ECL Basic Kit (RM00020).
Exposure time: 20s.



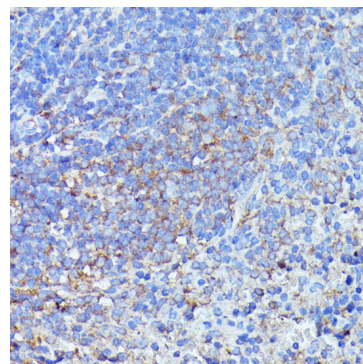
Western blot analysis of lysates from Rat spleen, using Septin 1 Rabbit pAb (A17471) at 1:1000 dilution.
Secondary antibody: HRP Goat Anti-Rabbit IgG (H+L) (AS014) at 1:10000 dilution.
Lysates/proteins: 25µg per lane.
Blocking buffer: 3% nonfat dry milk in TBST.
Detection: ECL Basic Kit (RM00020).
Exposure time: 180s.



Immunohistochemistry analysis of paraffin-embedded rat spleen using Septin 1 Rabbit pAb (A17471) at dilution of 1:100 (40x lens). Perform microwave antigen retrieval with 10 mM PBS buffer pH 7.2 before commencing with IHC staining protocol.



Immunohistochemistry analysis of paraffin-embedded human appendix using Septin 1 Rabbit pAb (A17471) at dilution of 1:100 (40x lens). Perform microwave antigen retrieval with 10 mM PBS buffer pH 7.2 before commencing with IHC staining protocol.



Immunohistochemistry analysis of paraffin-embedded mouse spleen using Septin 1 Rabbit pAb (A17471) at dilution of 1:100 (40x lens). Perform microwave antigen retrieval with 10 mM PBS buffer pH 7.2 before commencing with IHC staining protocol.