

FCGR1B Rabbit pAb

Catalog No.: A17483

Basic Information

Observed MW

27kDa

Calculated MW

32kDa

Category

Primary antibody

Applications

ELISA,WB,IHC-P

Cross-Reactivity

Human

Background

Three distinct, but closely related classes of receptors that bind the Fc portion of IgG have been identified (FcγRI, II and III). The FcγRI family consists of three closely related genes termed A, B, and C. This gene likely encodes a non-functional protein that is not detectable at the cell surface and binds ligand with low affinity.

Recommended Dilutions

WB 1:500 - 1:2000

IHC-P 1:50 - 1:200

Immunogen Information

Gene ID

2210

Swiss Prot

Q92637

Immunogen

A synthetic peptide corresponding to a sequence within amino acids 100-200 of human FCGR1B (NP_001017986.1).

Synonyms

CD34; FCG1; FcRI; CD64b; FCGR1; IGFR1; IGFRB; FCGR1B; FcγRIa

Contact

☎ | 400-999-6126

✉ | cn.market@abclonal.com.cn

🌐 | www.abclonal.com.cn

Product Information

Source

Rabbit

Isotype

IgG

Purification

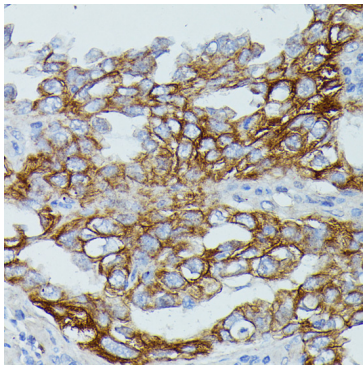
Affinity purification

Storage

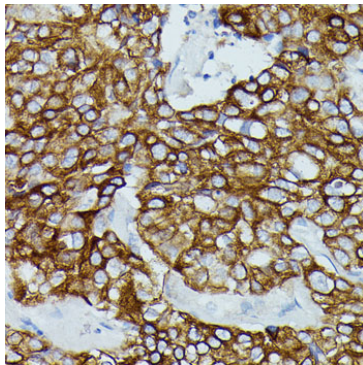
Store at -20°C. Avoid freeze / thaw cycles.

Buffer: PBS with 0.01% thimerosal, 50% glycerol, pH7.3.

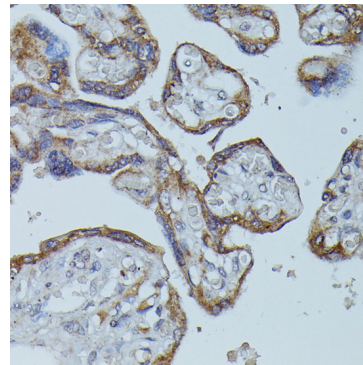
Validation Data



Immunohistochemistry analysis of paraffin-embedded human lung cancer using FCGR1B Rabbit pAb (A17483) at dilution of 1:100 (40x lens). Perform microwave antigen retrieval with 10 mM PBS buffer pH 7.2 before commencing with IHC staining protocol.



Immunohistochemistry analysis of paraffin-embedded human mammary cancer using FCGR1B Rabbit pAb (A17483) at dilution of 1:100 (40x lens). Perform microwave antigen retrieval with 10 mM PBS buffer pH 7.2 before commencing with IHC staining protocol.



Immunohistochemistry analysis of paraffin-embedded human placenta using FCGR1B Rabbit pAb (A17483) at dilution of 1:100 (40x lens). Perform microwave antigen retrieval with 10 mM PBS buffer pH 7.2 before commencing with IHC staining protocol.