

GK2 Rabbit pAb

Catalog No.: A17488

Basic Information

Observed MW

56kDa

Calculated MW

61kDa

Category

Primary antibody

Applications

ELISA, WB, IF/ICC

Cross-Reactivity

Human, Mouse, Rat

Background

Predicted to enable glycerol kinase activity. Predicted to be involved in several processes, including glycerol metabolic process; glycerol-3-phosphate biosynthetic process; and triglyceride metabolic process. Located in extracellular exosome.

Recommended Dilutions

WB	1:500 - 1:2000
IF/ICC	1:50 - 1:100

Immunogen Information

Gene ID

2712

Swiss Prot

Q14410

Immunogen

Recombinant fusion protein containing a sequence corresponding to amino acids 1-150 of human GK2 (NP_149991.2).

Synonyms

GKP2; GKTA; GK2

Contact

☎ | 400-999-6126

✉ | cn.market@abclonal.com.cn

🌐 | www.abclonal.com.cn

Product Information

Source

Rabbit

Isotype

IgG

Purification

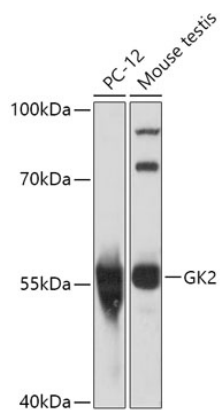
Affinity purification

Storage

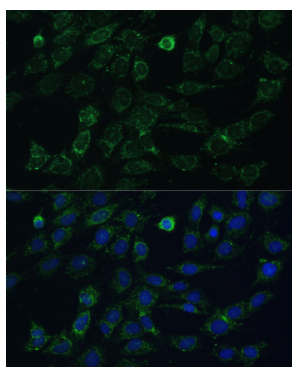
Store at -20°C. Avoid freeze / thaw cycles.

Buffer: PBS with 0.01% thimerosal, 50% glycerol, pH7.3.

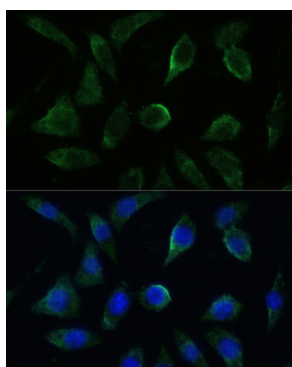
Validation Data



Western blot analysis of various lysates using GK2 Rabbit pAb (A17488) at 1:1000 dilution.
Secondary antibody: HRP Goat Anti-Rabbit IgG (H+L) (AS014) at 1:10000 dilution.
Lysates/proteins: 25µg per lane.
Blocking buffer: 3% nonfat dry milk in TBST.
Detection: ECL Basic Kit (RM00020).
Exposure time: 15s.



Immunofluorescence analysis of C6 cells using GK2 Rabbit pAb (A17488) at dilution of 1:100. Secondary antibody: Cy3 Goat Anti-Rabbit IgG (H+L) (AS007) at 1:500 dilution. Blue: DAPI for nuclear staining.



Immunofluorescence analysis of L929 cells using GK2 Rabbit pAb (A17488) at dilution of 1:100. Secondary antibody: Cy3 Goat Anti-Rabbit IgG (H+L) (AS007) at 1:500 dilution. Blue: DAPI for nuclear staining.