

EXOSC10 Rabbit pAb

Catalog No.: A17519

1 Publications

Basic Information

Observed MW

110kDa

Calculated MW

101kDa

Category

Primary antibody

Applications

WB, ELISA

Cross-Reactivity

Human, Mouse, Rat

Background

Enables 3'-5'-exoribonuclease activity. Involved in several processes, including RNA catabolic process; maturation of 5.8S rRNA; and negative regulation of telomere maintenance via telomerase. Located in cytosol; nuclear lumen; and transcriptionally active chromatin. Part of nuclear exosome (RNase complex).

Recommended Dilutions

WB 1:500 - 1:2000

ELISA Recommended starting concentration is 1 µg/mL. Please optimize the concentration based on your specific assay requirements.

Immunogen Information

Gene ID

5394

Swiss Prot

Q01780

Immunogen

Recombinant protein (or fragment). This information is considered to be commercially sensitive.

Synonyms

p2; p3; p4; RRP6; PMSCL; Rrp6p; PM-Scl; PMSCL2; PM/Scl-100; EXOSC10

Contact

☎ | 400-999-6126

✉ | cn.market@abclonal.com.cn

🌐 | www.abclonal.com.cn

Product Information

Source

Rabbit

Isotype

IgG

Purification

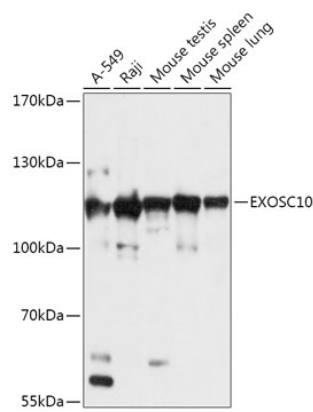
Affinity purification

Storage

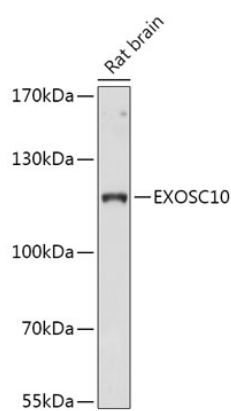
Store at -20°C. Avoid freeze / thaw cycles.

Buffer: PBS with 0.01% thimerosal, 50% glycerol, pH7.3.

Validation Data



Western blot analysis of various lysates using EXOSC10 Rabbit pAb (A17519) at 1:1000 dilution.
Secondary antibody: HRP-conjugated Goat anti-Rabbit IgG (H+L) (AS014) at 1:10000 dilution.
Lysates/proteins: 25µg per lane.
Blocking buffer: 3% nonfat dry milk in TBST.
Detection: ECL Basic Kit (RM00020).
Exposure time: 10s.



Western blot analysis of lysates from Rat brain, using EXOSC10 Rabbit pAb (A17519) at 1:1000 dilution.
Secondary antibody: HRP-conjugated Goat anti-Rabbit IgG (H+L) (AS014) at 1:10000 dilution.
Lysates/proteins: 25µg per lane.
Blocking buffer: 3% nonfat dry milk in TBST.
Detection: ECL Basic Kit (RM00020).
Exposure time: 30s.