

PNLIPRP1 Rabbit pAb

Catalog No.: A17520

Basic Information

Observed MW

52kDa

Calculated MW

52kDa

Category

Primary antibody

Applications

ELISA, WB, IHC-P, IF/ICC

Cross-Reactivity

Human, Mouse, Rat

Background

Predicted to enable calcium ion binding activity. Predicted to be involved in lipid catabolic process. Predicted to be located in extracellular region. Biomarker of prostate cancer.

Recommended Dilutions

WB	1:500 - 1:2000
IHC-P	1:100 - 1:200
IF/ICC	1:50 - 1:200

Immunogen Information

Gene ID

5407

Swiss Prot

P54315

Immunogen

Recombinant fusion protein containing a sequence corresponding to amino acids 298-467 of human PNLIPRP1 (NP_006220.1).

Synonyms

PLRP1; PNLIPRP1

Contact

☎ | 400-999-6126

✉ | cn.market@abclonal.com.cn

🌐 | www.abclonal.com.cn

Product Information

Source

Rabbit

Isotype

IgG

Purification

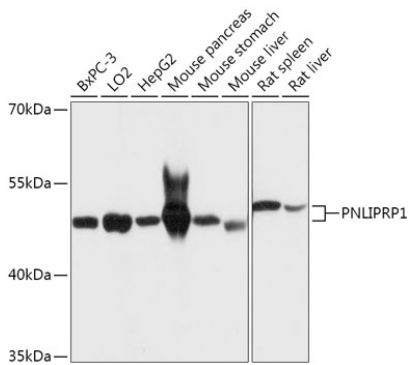
Affinity purification

Storage

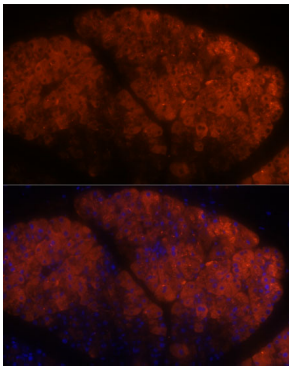
Store at -20°C. Avoid freeze / thaw cycles.

Buffer: PBS with 0.01% thimerosal, 50% glycerol, pH7.3.

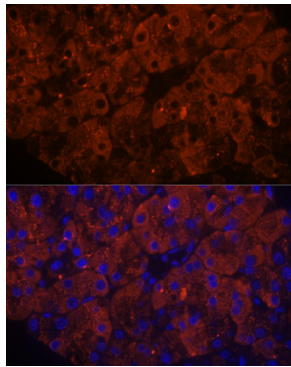
Validation Data



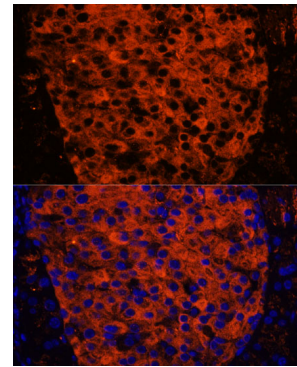
Western blot analysis of various lysates using PNLIPRP1 Rabbit pAb (A17520) at 1:1000 dilution. Secondary antibody: HRP Goat Anti-Rabbit IgG (H+L) (AS014) at 1:10000 dilution. Lysates/proteins: 25µg per lane. Blocking buffer: 3% nonfat dry milk in TBST. Detection: ECL Basic Kit (RM00020). Exposure time: 5s.



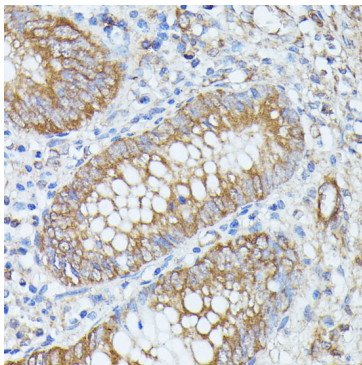
Immunofluorescence analysis of paraffin-embedded rat pancreas using PNLIPRP1 Rabbit pAb (A17520) at dilution of 1:100. Secondary antibody: Cy3 Goat Anti-Rabbit IgG (H+L) (AS007) at 1:500 dilution. Blue: DAPI for nuclear staining.



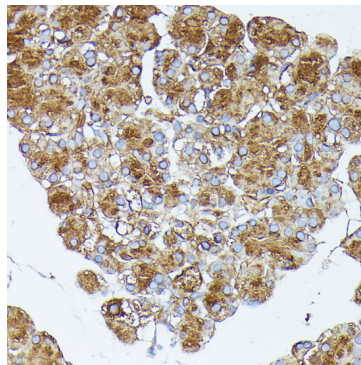
Immunofluorescence analysis of paraffin-embedded rat pancreas using PNLIPRP1 Rabbit pAb (A17520) at dilution of 1:100. Secondary antibody: Cy3 Goat Anti-Rabbit IgG (H+L) (AS007) at 1:500 dilution. Blue: DAPI for nuclear staining.



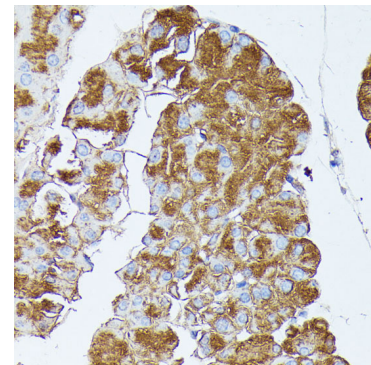
Immunofluorescence analysis of paraffin-embedded mouse pancreas using PNLIPRP1 Rabbit pAb (A17520) at dilution of 1:100. Secondary antibody: Cy3 Goat Anti-Rabbit IgG (H+L) (AS007) at 1:500 dilution. Blue: DAPI for nuclear staining.



Immunohistochemistry analysis of paraffin-embedded human appendix using PNLIPRP1 Rabbit pAb (A17520) at dilution of 1:100 (40x lens). Perform microwave antigen retrieval with 10 mM PBS buffer pH 7.2 before commencing with IHC staining protocol.



Immunohistochemistry analysis of paraffin-embedded rat pancreas using PNLIPRP1 Rabbit pAb (A17520) at dilution of 1:100 (40x lens). Perform microwave antigen retrieval with 10 mM PBS buffer pH 7.2 before commencing with IHC staining protocol.



Immunohistochemistry analysis of paraffin-embedded mouse pancreas using PNLIPRP1 Rabbit pAb (A17520) at dilution of 1:100 (40x lens). Perform microwave antigen retrieval with 10 mM PBS buffer pH 7.2 before commencing with IHC staining protocol.