

SCML1 Rabbit pAb

Catalog No.: A17529

Basic Information

Observed MW

37kDa

Calculated MW

37kDa

Category

Primary antibody

Applications

ELISA, WB

Cross-Reactivity

Rat

Background

Predicted to enable chromatin binding activity and histone binding activity. Predicted to be involved in negative regulation of transcription, DNA-templated. Predicted to be active in nucleus.

Recommended Dilutions

WB 1:500 - 1:2000

Immunogen Information

Gene ID

6322

Swiss Prot

Q9UN30

Immunogen

Recombinant fusion protein containing a sequence corresponding to amino acids 50-200 of human SCML1 (NP_006737.2).

Synonyms

SCML1

Contact

 | 400-999-6126

 | cn.market@abclonal.com.cn

 | www.abclonal.com.cn

Product Information

Source

Rabbit

Isotype

IgG

Purification

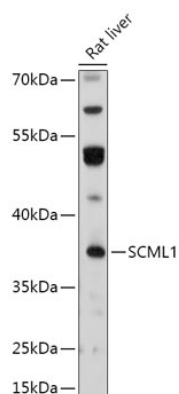
Affinity purification

Storage

Store at -20°C. Avoid freeze / thaw cycles.

Buffer: PBS with 0.01% thimerosal, 50% glycerol, pH7.3.

Validation Data



Western blot analysis of lysates from Rat liver, using SCML1 Rabbit pAb (A17529) at 1:1000 dilution.
Secondary antibody: HRP Goat Anti-Rabbit IgG (H+L) (AS014) at 1:10000 dilution.
Lysates/proteins: 25µg per lane.
Blocking buffer: 3% nonfat dry milk in TBST.
Detection: ECL Basic Kit (RM00020).
Exposure time: 60s.