

SLC9A3 Rabbit pAb

Catalog No.: A17532

Basic Information

Observed MW

100kDa

Calculated MW

93kDa

Category

Primary antibody

Applications

ELISA, WB

Cross-Reactivity

Rat

Background

The protein encoded by this gene is an epithelial brush border Na/H exchanger that uses an inward sodium ion gradient to expel acids from the cell. Defects in this gene are a cause of congenital secretory sodium diarrhea. Pseudogenes of this gene exist on chromosomes 10 and 22.

Recommended Dilutions

WB 1:500 - 1:2000

Immunogen Information

Gene ID

6550

Swiss Prot

P48764

Immunogen

Recombinant fusion protein containing a sequence corresponding to amino acids 460-600 of human SLC9A3 (NP_004165.2).

Synonyms

NHE3; DIAR8; NHE-3; SLC9A3

Contact

 | 400-999-6126

 | cn.market@abclonal.com.cn

 | www.abclonal.com.cn

Product Information

Source

Rabbit

Isotype

IgG

Purification

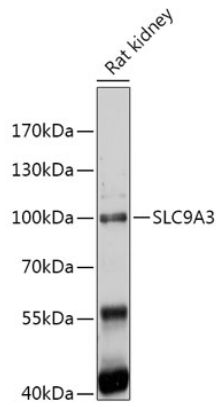
Affinity purification

Storage

Store at -20°C. Avoid freeze / thaw cycles.

Buffer: PBS with 0.01% thimerosal, 50% glycerol, pH7.3.

Validation Data



Western blot analysis of lysates from Rat kidney, using SLC9A3 Rabbit pAb (A17532) at 1:1000 dilution.
Secondary antibody: HRP Goat Anti-Rabbit IgG (H+L) (AS014) at 1:10000 dilution.
Lysates/proteins: 25µg per lane.
Blocking buffer: 3% nonfat dry milk in TBST.
Detection: ECL Enhanced Kit (RM00021).
Exposure time: 120s.