

SIGLEC1 Rabbit pAb

Catalog No.: A17533

Basic Information

Observed MW

200kDa

Calculated MW

183kDa

Category

Primary antibody

Applications

ELISA, WB

Cross-Reactivity

Human

Background

This gene encodes a member of the immunoglobulin superfamily. The encoded protein is a lectin-like adhesion molecule that binds glycoconjugate ligands on cell surfaces in a sialic acid-dependent manner. It is a type I transmembrane protein expressed only by a subpopulation of macrophages and is involved in mediating cell-cell interactions. The protein plays an important role in multiple human diseases and bacterial and viral infections has been shown to enhance SARS-CoV-2 infection.

Recommended Dilutions

WB 1:500 - 1:2000

Immunogen Information

Gene ID

6614

Swiss Prot

Q9BZZ2

Immunogen

Recombinant fusion protein containing a sequence corresponding to amino acids 50-300 of human SIGLEC1 (NP_075556.1).

Synonyms

SN; CD169; SIGLEC-1; SIGLEC1

Contact

☎ | 400-999-6126

✉ | cn.market@abclonal.com.cn

🌐 | www.abclonal.com.cn

Product Information

Source

Rabbit

Isotype

IgG

Purification

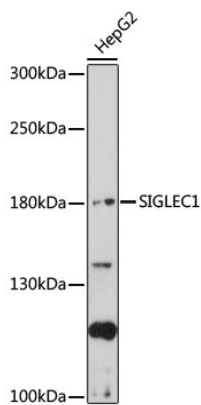
Affinity purification

Storage

Store at -20°C. Avoid freeze / thaw cycles.

Buffer: PBS with 0.01% thimerosal, 50% glycerol, pH7.3.

Validation Data



Western blot analysis of lysates from HepG2 cells, using SIGLEC1 Rabbit pAb (A17533) at 1:1000 dilution.
Secondary antibody: HRP Goat Anti-Rabbit IgG (H+L) (AS014) at 1:10000 dilution.
Lysates/proteins: 25µg per lane.
Blocking buffer: 3% nonfat dry milk in TBST.
Detection: ECL Enhanced Kit (RM00021).
Exposure time: 90s.