

SPRR1A Rabbit pAb

Catalog No.: A17535 **1 Publications**

Basic Information

Observed MW

12kDa

Calculated MW

10kDa

Category

Primary antibody

Applications

ELISA, WB, IF/ICC

Cross-Reactivity

Human, Mouse, Rat

Background

A structural constituent of skin epidermis. Involved in keratinocyte differentiation and peptide cross-linking. Located in cornified envelope.

Recommended Dilutions

WB 1:500 - 1:1000

IF/ICC 1:50 - 1:200

Immunogen Information

Gene ID

6698

Swiss Prot

P35321

Immunogen

A synthetic peptide corresponding to a sequence within amino acids 1-89 of human SPRR1A (NP_005978.2).

Synonyms

SPRK; SPRR1A

Contact

 | 400-999-6126

 | cn.market@abclonal.com.cn

 | www.abclonal.com.cn

Product Information

Source

Rabbit

Isotype

IgG

Purification

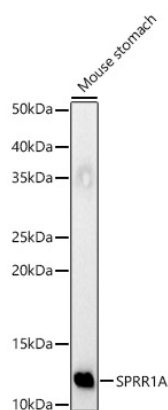
Affinity purification

Storage

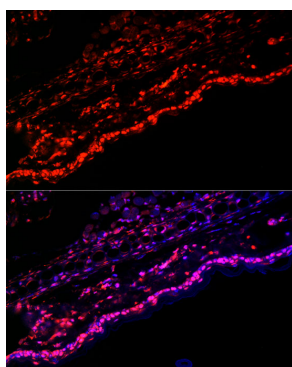
Store at -20°C. Avoid freeze / thaw cycles.

Buffer: PBS with 0.01% thimerosal, 50% glycerol, pH7.3.

Validation Data



Western blot analysis of Mouse stomach, using SPRR1A Rabbit pAb (A17535) at 1:1000 dilution.
Secondary antibody: HRP Goat Anti-Rabbit IgG (H+L) (AS014) at 1:10000 dilution.
Lysates/proteins: 25µg per lane.
Blocking buffer: 3% nonfat dry milk in TBST.
Detection: ECL Basic Kit (RM00020).
Exposure time: 30s.



Immunofluorescence analysis of paraffin-embedded mouse skin using SPRR1A Rabbit pAb (A17535) at dilution of 1:100 (40x lens).
Secondary antibody: Cy3 Goat Anti-Rabbit IgG (H+L) (AS007) at 1:500 dilution. Blue: DAPI for nuclear staining. Perform high pressure antigen retrieval with 0.01 M citrate buffer (pH 6.0) prior to IF staining.